



C2M v2.9

5.6.3.1 Manage Tracked Assets and Devices

Creation Date: January 29, 2025

Last Updated: January 29, 2025

ORACLE®

Copyright © 2024, Oracle. All rights reserved.

This document is provided for information purposes only and the contents hereof are subject to change without notice.

This document is not warranted to be error-free, nor subject to any other warranties or conditions, whether expressed orally or implied in law, including implied warranties and conditions of merchantability or fitness for a particular purpose. We specifically disclaim any liability with respect to this document and no contractual obligations are formed either directly or indirectly by this document. This document may not be reproduced or transmitted in any form or by any means, electronic or mechanical, for any purpose, without our prior written permission. Oracle, JD Edwards, PeopleSoft, and Siebel are registered trademarks of Oracle Corporation and/or its affiliates. Other names may be trademarks of their respective owners.

Contents

BRIEF DESCRIPTION 4

BUSINESS PROCESS MODEL PAGE 1 5

BUSINESS PROCESS MODEL PAGE 2 6

BUSINESS PROCESS MODEL PAGE 3 7

BUSINESS PROCESS MODEL PAGE 4 8

BUSINESS PROCESS MODEL PAGE 5 9

BUSINESS PROCESS MODEL PAGE 6 10

DETAIL BUSINESS PROCESS MODEL DESCRIPTION..... 11

TEST ASSETS RELATED TO THE CURRENT PROCESS..... 37

DOCUMENT CONTROL 38

ATTACHMENTS:..... 39

Asset Add/Update/Delete 39

Asset Specifications..... 46

New Device (Template)..... 49

Device..... 53

Device Configuration – Create and Update 55

Measuring Component – Create and Update 59

Meter Multiplier..... 63

Installation Constant..... 64

Activity Type..... 64

Sample File Structure for Bulk Asset Load by Asset type..... 65

Miscellaneous. Related Web Services 66

Brief Description

Business Process:	5.6.3.1 Manage Tracked Assets and Devices
Process Type:	Sub-Process
Parent Process:	5.6.3 C2M. Manage Assets and Devices
Sibling Processes:	5.6.3.2 C2M. Manage Device Installation and Commissioning 5.6.3.3 C2M. Manage Device De-Installation, Decommissioning and Retirement 5.1.5.1 C2M.Manage Metered Site 4.2.1.1 C2M.Upload Device Measurements. System IMD

This process takes place when business requires to store and maintain information about Assets (Devices) or Components and their Disposition (Location and Status). Application creates records and tracks information about Assets (Devices) or Components from the moment they are received from Vendor. Application follows lifecycle of Asset or Component including Asset/Component rejection or acceptance with or without inspection, storing accepted Assets or Components in specific location. The process also describes setting up the device, the device configuration, and measuring component(s). However, it does not include creating an installation event – connecting the device to the service point. Please refer to 5.6.3.2 Manage Device Installation and Commissioning for that process.

Note: Assets: Objects that are part of the infrastructure such as meters, transformers, etc.

Components: Objects that are installed on another device, usually an asset.

Devices are physical objects that hold one or more measuring components that can produce data to be handled by the system. Examples of devices include meters, demand response devices, weather stations, etc.

A Device can have one or more device configurations over time. A device's measuring components are associated with the device via device configurations.

Each Device configuration can have one or more measuring components associated with it.

Measuring Components (MC) are single channels for which data will be received and stored in the system.

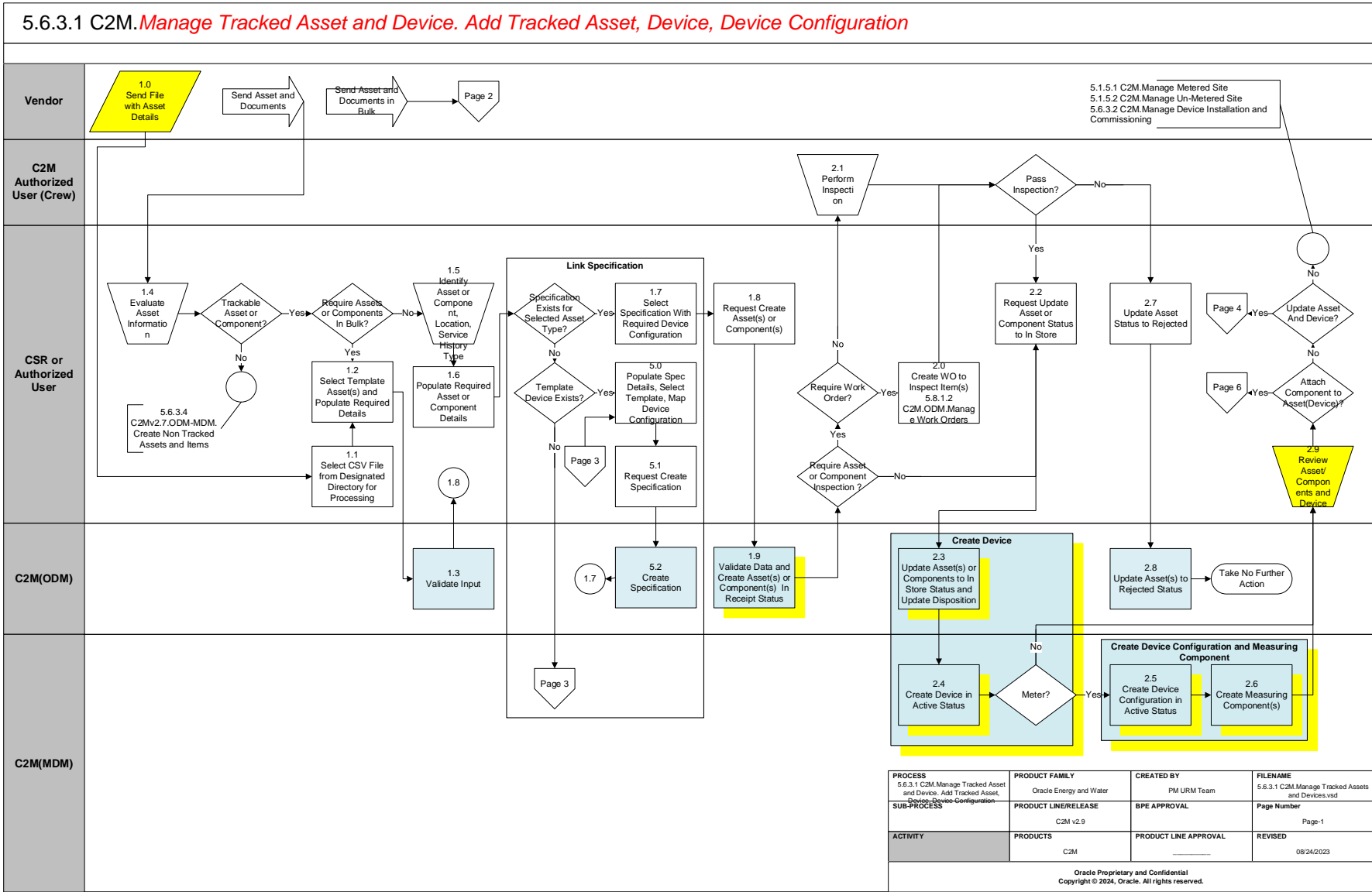
A measuring component can be associated to a physical device, which can have one or more measuring components, or it can be one of several other types of measuring components. Examples of other measuring components include:

- **Aggregator:** A class of measuring component that stores measurements that represent a summarization of other measurements from a potentially diverse set of devices.
- **Interval Scratchpad:** A class of measuring component that provides users with a means to manipulate "scratchpad" measurement data without affecting existing "live" measurement data.
- **Standalone:** A measuring component that is not related to a physical meter, e.g., market prices, weather data, etc.

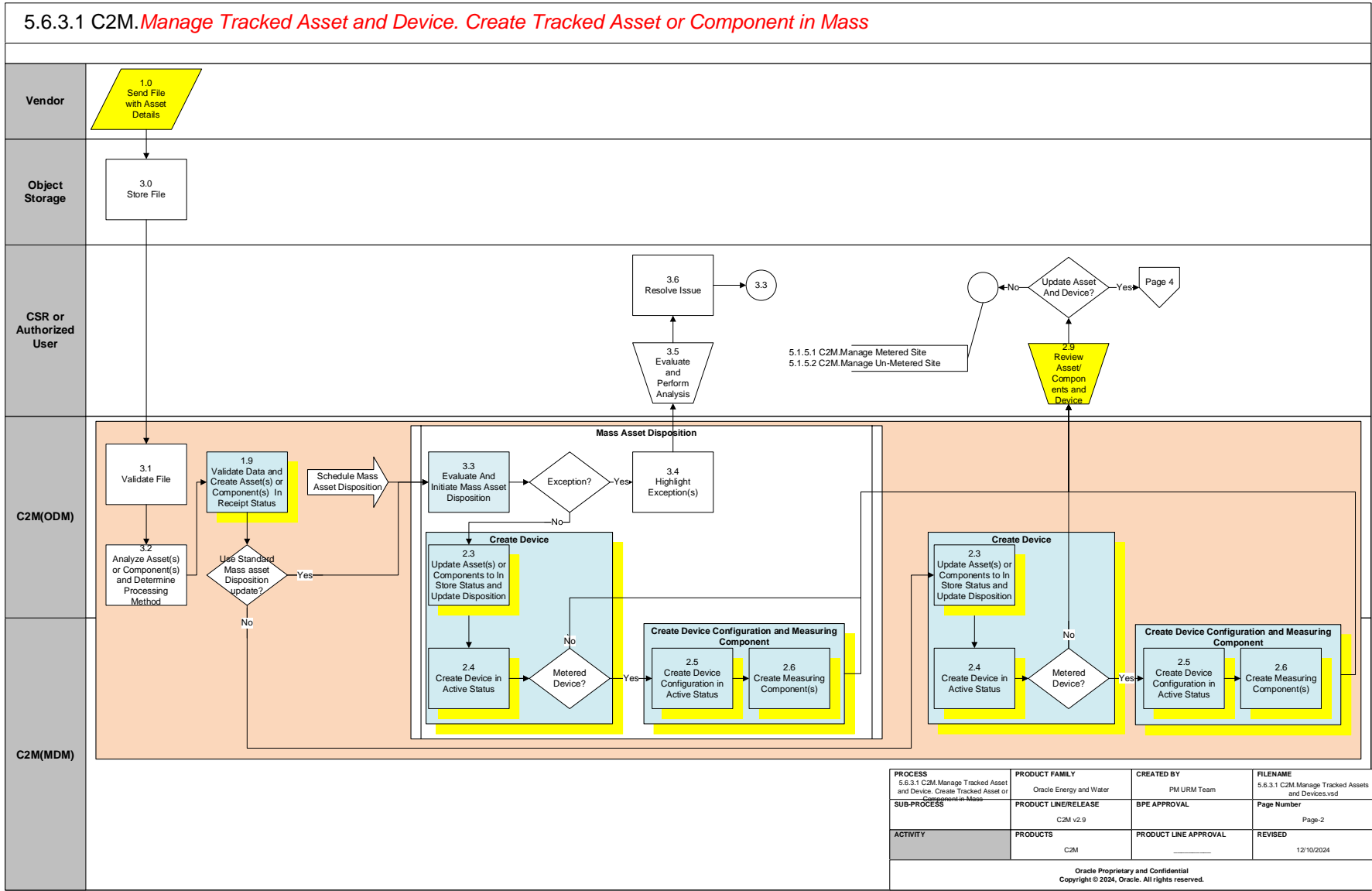
When either a Meter Multiplier or Installation Constant is changed, it is validated and may become eligible for measurement reprocessing. C2M (MDM) creates system IMDs skipping the process of VEE and Consumption sync. The reprocessed IMDs are sent as subsequent correction to Billing system.

Service points are locations at which a company supplies service. Service points are used to store information describing the attributes of the service point.

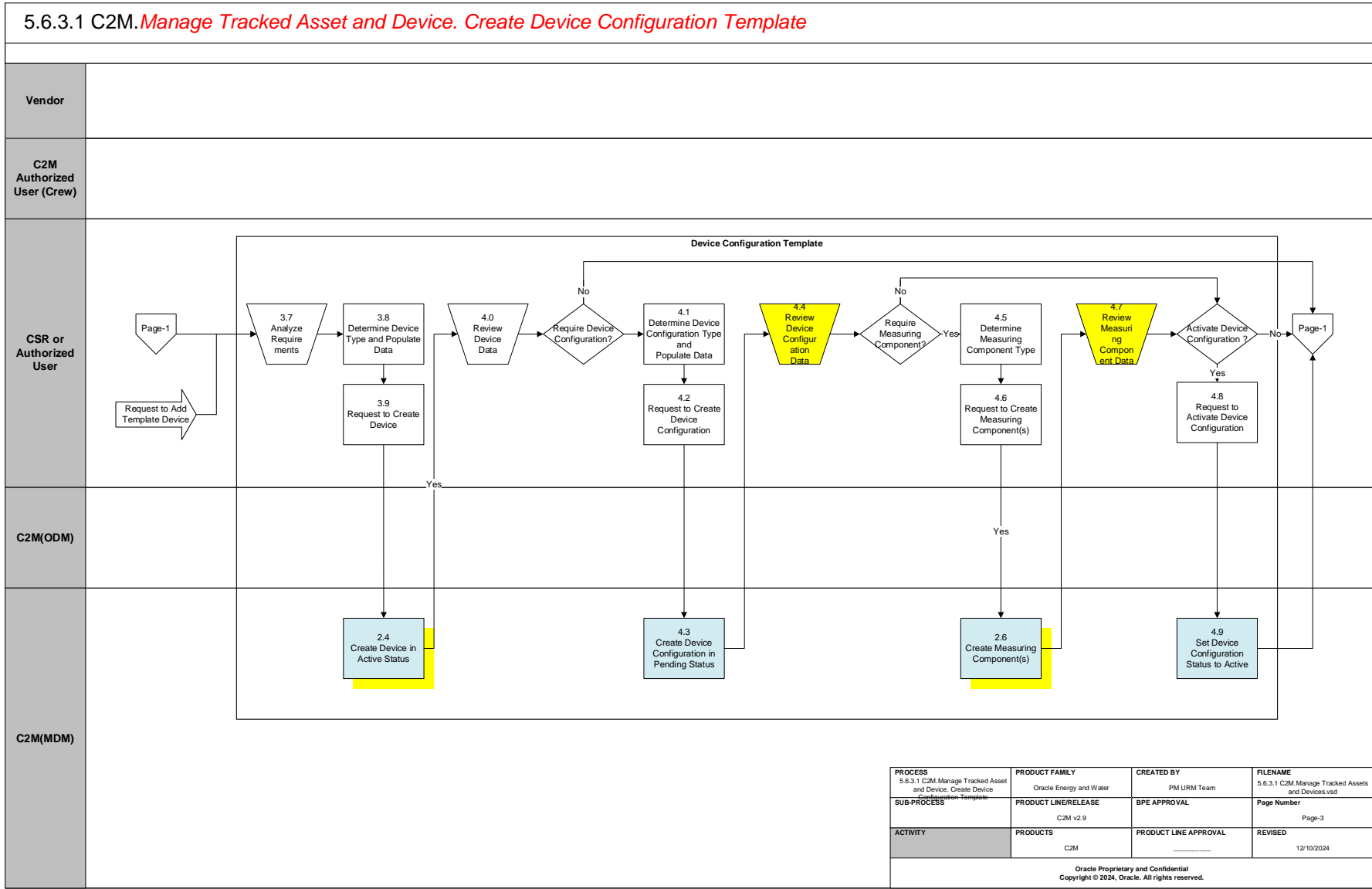
Business Process Model Page 1



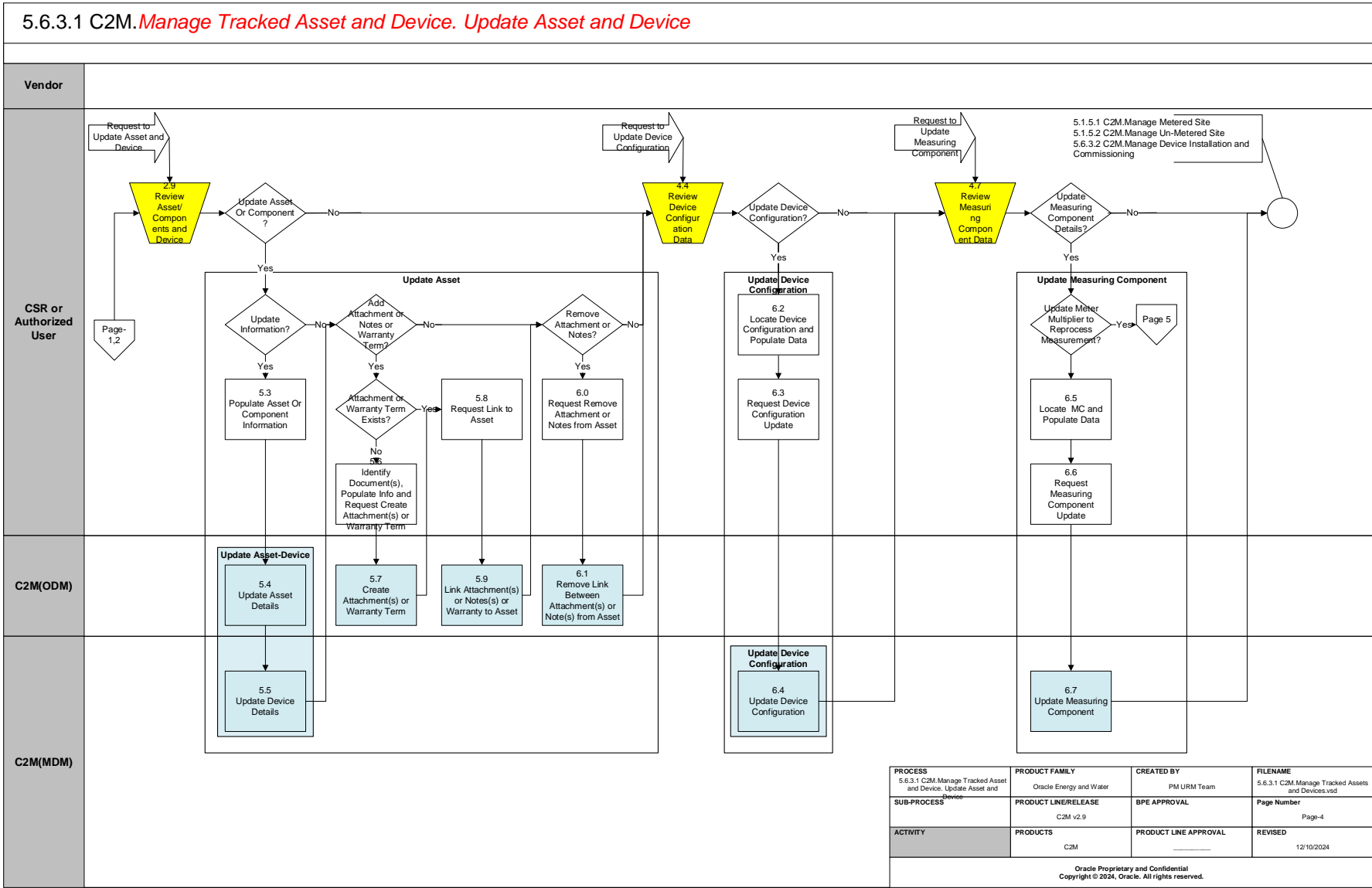
Business Process Model Page 2



Business Process Model Page 3

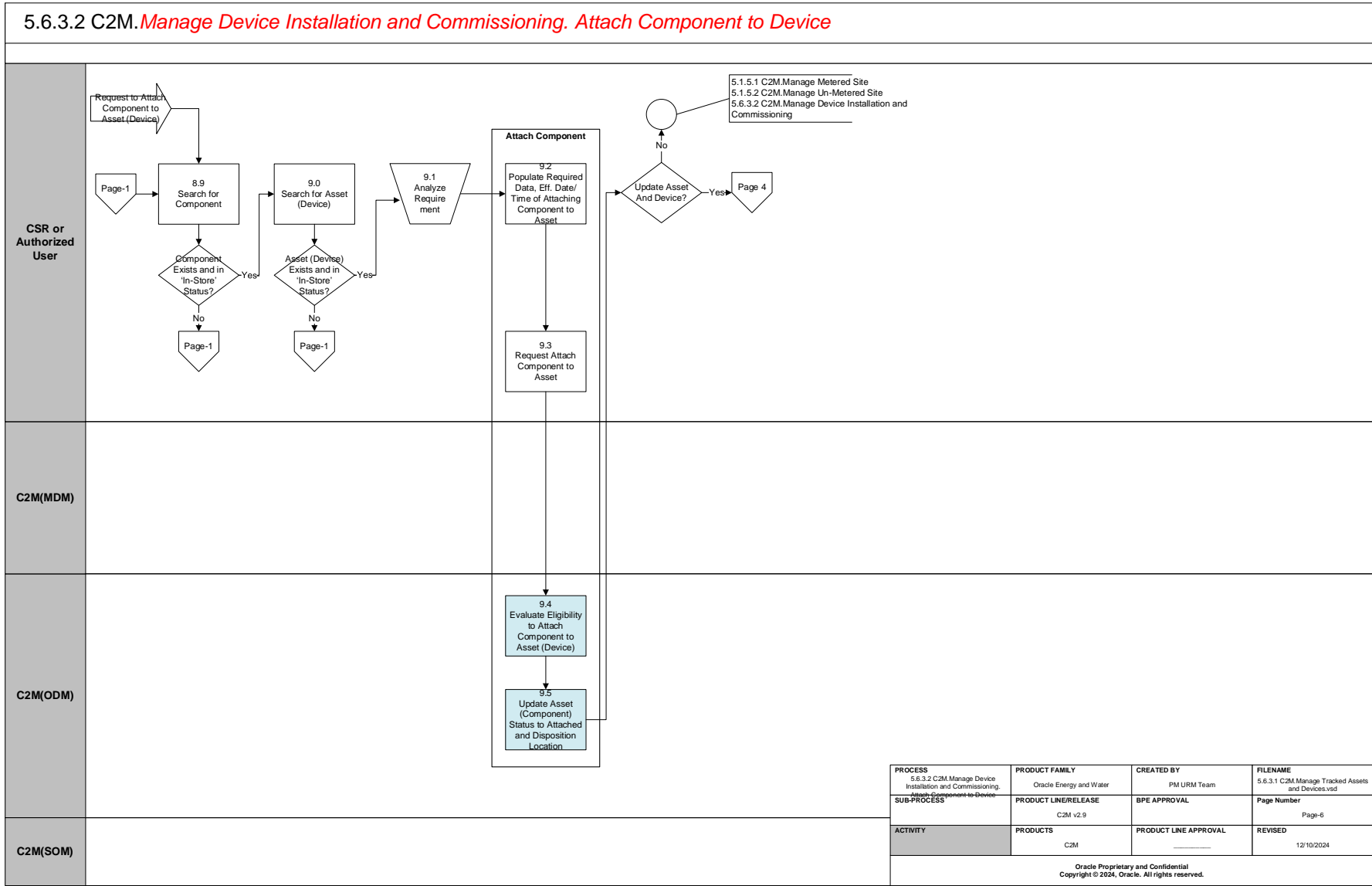


Business Process Model Page 4





Business Process Model Page 6



Detail Business Process Model Description

1.0 Send File with Asset details

Actor/Role: Vendor

Description:

Vendor sends Asset file or document with material (tracked item) details such as serial number and pallet number.

1.1 Select CSV File from Designated Directory for Processing

Actor/Role: CSR or Authorized User

Description:

CSR or Authorized User selects CSV file from the location where file is saved.

Note: If file received from vendor is excel document, C2M User needs to convert it to CSV file and then upload it to designated directory. This is part of the Asset Replication process

1.2 Select Template Asset(s) and Populate Required Details

Actor/Role: CSR or Authorized User

Description:

CSR or Authorized User selects template asset and populates required details, if it's required to create tracked assets in bulk.

Note: This is part of the Asset Replication process

1.3 Validate Input and Create Asset(s)

Actor/Role: C2M - ODM

Description:

C2M-ODM validates input and initiates bulk asset replication, similar to the template Asset in "In Receipt" status.

Process Plug-in enabled (Y) Available Algorithm(s):

W1-ASTREPVAL - Asset Replication Activity Validation
W1-VLACTACFG - Validate Activity Admin Configuration

Configuration required (Y) Business Object:

W1-AssetReplicationActivity

Configuration required (Y) Entities to configure:

Asset Type
Component Type
Template Asset
W1-StorageLocationType
W1-StorageLocation
Manufacturer
Model
Metrology Firmware

Inbound Web Service(s):

NIC Firmware

W1-AssetReplicationActivity

1.4 Evaluate Asset Information

Actor/Role: CSR or Authorized User

Description:

CSR or Authorized User gathers all the required attributes for adding the Asset.

1.5 Identify Asset or Component, Location, Service History Type

Actor/Role: CSR or Authorized User

Description:

CSR or Authorized User Identifies Asset Type or Component Type. The user also identifies the Valid Location Types and Valid Service History Types. It is also possible to define Asset Attribute Types.

Process Plug-in enabled (Y) Available Algorithm(s):

Business Object (Y) Business Object

W2-BDGASTINF - Badged Asset Information
W2-BDGNOVAL - Validate Badge Number
W2-SRLNOVAL - Validate Serial Number
W2-VALCONFIG - Validate Configuration
W1-SVCHSINFO - Service History Information
W1-DFSHSOWAG - Default Service History Owning Access Group
W1-DFNDSVH - Default Location from Asset on Service History
W1-SVCSCHVAL - Service History Work Order Creation Interval Validation
W2-COMPFWLOG - Communication Component Firmware Audit
W2-DFLCCCONF - Default Communication Component Measurement Configuration
W2-DEFCONDT - Default Configuration Effective Date Time
W2-COMPFWVAL - Component Firmware Validation
W2-CMPATTVLD - Communication Component Enter Attached Validation
W1-AssetType
W1-ComponentType

W2-CommunicationComponent
W1-Item
W1-StorageLocationType
W1-StorageLocation
W1-ServiceHistoryType
W1-ServiceHistory

1.6 Populate Required Asset or Component Details

Actor/Role: CSR or Authorized User

Description:

CSR or Authorized User populates required details to create a new Asset or a new Component.

1.7 Select Specification with Required Device Configuration Group: Link Specification

Actor/Role: CSR or Authorized User

Description:

CSR or Authorized User selects existing Specification.

Process Plug-in enabled (Y) **Available Algorithm(s):**

W1-VALMANMOD - Validate Manufacturer and Model
W1DEFUSRACCG - Default User Owning Organization
W2-C2MPECVAL - Communication Component Specification Validation
W2-CRSPECVAL - Communication Relay Specification Validation
W2-SMSPECVAL - Smart Meter Specification Validation

Business Object (Y) **Business Object**

W1-Specification
W2-CommunicationComponentSpec
W2-CommunicationRelaySpec
W2-ManualMeterSpecification
W2-SmartMeterSpecification
W1-ItemSpecification

Configuration Required (Y) **Entities to Configure:**

W1-AssetType
W1-ComponentType
W1-StorageLocationType
W1-StorageLocation

Manufacturer
Model
Metrology Firmware
NIC Firmware
Device Type
Device Configuration Type
Measuring Component Type
Specification
Template Device

1.8 Request Create Asset(s) or Component(s)**Actor/Role:** CSR or Authorized User**Description:**

CSR or Authorized User Requests to create Asset or Component.

1.9 Validate Data and Create Asset(s) or Component(s) "In Receipt" Status**Actor/Role:** C2M - ODM**Description:**

C2M-ODM creates tracked asset or component in disposition "In Receipt".

Process Plug-in enabled (Y) Available Algorithm(s):

W1-ASTMNTMON - Asset Maintenance Monitor
W2-CMPATTVLD - Communication Component Enter Attached Validation
W1-ASSETINFO - Asset Information
W1-ASTATTVAL - Asset Attribute Validations
W1-ASTDPNDEF - Default Asset Disposition
W2-DFLCCCONF - Default Communication Component Measurement Configuration
W2-COMPFWVAL - Component Firmware Validation
W2-CRFWLOG - Communication Relay Firmware Audit
W1-VALASTSPC - Validate changes to Asset Specification
W2-BDGASTINF - Badged Asset Information
W1-ASTDPNAUD - Asset Current Disposition Validation
W2-DFLMNMCON - Default Manual Meter Measurement Configuration
W2-COMPFWLOG - Communication Component Firmware Audit

Business Object (Y)

Business Object

Configuration required (Y)

Entities to Configure:

W2-DFLSMCONF - Default Smart Meter Measurement Configuration
W2-BDGNOVAL - Validate Badge Number
W2-SRLNOVAL - Validate Serial Number
W2-DEFCONDT - Default Configuration Effective Date Time
W2-VALCONFIG - Validate Configuration

W1-TrackedAsset
W1-Item
W2-CommunicationRelay
W2-ManualMeter
W2-SmartMeter
W1-ComponentType
W2-CommunicationComponent

Asset Type
Component Type
W1-StorageLocation
Extendable Lookup: W1-AssetDisposition
Extendable Lookup: X1-ODMMDM-MDMODM-Lookup
Manufacturer
Model
Metrology Firmware
NIC Firmware
Device Type
Device Configuration Type
Measuring Component Type
Specification
Template Device

2.0 Create WO to Inspect Item(s)

Actor/Role: CSR or Authorized User

Description:

CSR or Authorized User creates WO to Inspect Items. Refer 5.8.1.2 C2M.ODM.Manage Work Orders for details.

2.1 Perform Inspection

Actor/Role: CSR or Authorized User

Description:

For Assets that require Inspection, CSR or Authorized User performs Inspection

2.2 Request Update Asset or Component Status to In Store

Actor/Role: CSR or Authorized User

Description:

CSR or Authorized User updates Asset or Component status to In Store.

2.3 Update Asset(s) or Component(s) to In Store Status and Update Disposition Group: Create Device
Group: Mass Asset Disposition

Actor/Role: C2M (ODM)

Description:

C2M (ODM) updates Asset or Component Status to In Store and Disposition to In Store.

In the initial stage, the Asset related Scripts are executed which ensure that the Asset Disposition is correctly defined. It is important that the Extendable Lookups are correctly defined so that Asset Status in ODM has a respective Device Status in MDM system. Finally, the Device related scripts are executed which create the Device based on the Template Device defined in the Specification.

For Assets such as Meters, the Specification and Template Device will specify the Device Configuration and Measuring Component. Once the Device is created, the system will call scripts to create respective device configuration and measuring components for this New Device. For Components and Items, these scripts may not be executed.

Process Plug-in enabled (Y) **Available Algorithm(s):**

W1-ASTMNTMON - Asset Maintenance Monitor
W2-CMPATTVLD - Communication Component Enter Attached Validation
W1-ASTATTVAL - Asset Attribute Validations
W1-ASTDPNAUD - Asset Current Disposition Validation
W2-BDGNOVAL - Validate Badge Number
W2-SRLNOVAL - Validate Serial Number
W2-VALCONFIG - Validate Configuration

Business Object (Y) **Business Object:**

W1-AssetType
W1-TrackedAsset
W1-Item
W2-CommunicationRelay
W2-ManualMeter
W2-SmartMeter
W2-CommunicationComponent
W1-AssetDisposition

Configuration required (Y)	Entities to Configure	X1-C2MMasterConfiguration
		D1-SmartMeter
		D1-DeviceConfiguration
Scripts		Extendable Lookup: W1-AssetDisposition
		Extendable Lookup: X1-ODMMDM-MDMODM-Lookup
		W1-AsTyInDpn
		W2-BdgAstInf
		X1-ODMMDMVm
		X1-OM-MO-VM
		X1-DefTempDv

2.4 Create Device in Active Status Group: Create Device
Group: Mass Asset Disposition
Group: Device Configuration Template

Actor/Role: C2M (MDM)
Description:
C2M (MDM) creates the Device in Active status
Note: This task can be triggered from Manual and automated (Synchronization) processes

Process Plug-in enabled (Y)	Available Algorithm(s):	D1-PERESTM - Periodic Estimation
		D1-DVCEQTVAl - Device Equipment Validation
		D1-ITEMINFO - Item Information
		D1-MANLINFO - Manual Meter - Information
		D1-SMARTINFO - Smart Meter - Information
		D1-VALITRET - Validate Item Retirement Date
		D1-VALRETDT - Validate Device Retirement Date
Business Object (Y)	Business Object	D1-SmartMeter
		D1-ManualMeter
		D1-Item
		D1-CommComponentDevice
Configuration required (Y)	Entities to Configure:	Device Type
		Service Type

Head End System
Lookup: IN_DATA_SHIFT_FLG

2.5 Create Device Configuration in Active Status Group: Create Device Configuration and Measuring Component
Group: Mass Asset Disposition

Actor/Role: C2M (MDM)

Description:

C2M (MDM) creates the Device Configuration in Active status if it is defined in specification device template.

Note: This task can be triggered from Manual and automated (Synchronization) processes

Process Plug-in enabled (Y) **Available Algorithm(s):**

D1-CHKREQMC - Check if required MC is configured on the DC type
D1-MCTYPVAL - Measuring Component Type Validation
D1-DVCOINFO - Device Configuration Information
D1-USTMCTZDC - Update Channel Statistics MC Time Zone With Device Configuration Time Zone
D1-DELMC - Delete Associated Measuring Components
D1-DEFTIMZON - Default Time Zone value based on Installation Option
D1-INSTDCVAL - Earlier Installed Device Configuration
D1-VALDCTMZN - Validate Device Configuration Time Zone

Business Object (Y) **Business Object**

D1-DeviceConfiguration

Configuration required (Y) **Entities to Configure:**

Device Configuration Type

2.6 Create Measuring Component(s) Group: Create Device Configuration and Measuring Component
Group: Mass Asset Disposition
Group: Device Configuration Template

Actor/Role: C2M (MDM)

Description:

C2M (MDM) creates the Measuring Component if it is defined in specification device template.

Note: This task can be triggered from Manual and automated (Synchronization) processes

Process Plug-in enabled (Y) **Available Algorithm(s):**

Business Object (Y)

Business Object

Configuration required (Y)

Entities to Configure:

2.7 Update Asset Status to Rejected

Actor/Role: CSR or Authorized User

Description:

CSR or Authorized User updates Asset status to Rejected.

2.8 Update Asset(s) to Rejected Status

Actor/Role: C2M (ODM)

Description:

C2M (ODM) updates Asset status to Rejected

Process Plug-in enabled (Y)

Available Algorithm(s):

D1-CIITBIH - Create Interval IMD and To Do Based Upon Install History
D1-CRPJMCPMC - Create Projection MCs Connected to Physical MC
D1-DIMDCPRE - Delete Initial Measurement Data of Measuring Component
D1-INTMCVAL - Check if Measuring Component's Type is Interval
D1-DETMULCIC - Detect Multiplier Change for Internal Channel
D1-ARSPE - Auto-Read Scalar Periodic Estimation
D1-SMTMCINFO - Measuring Component for Smart Devices - Information
D1-CRSTMCPMC - Create Statistics Measuring Components connected to Physical Measuring Component
D1-RELMCCVAL - Validate Consumption Reference Measuring Component
D1-SCMCVAL - Check if Measuring Component's Type is Scalar
D1-DETMULCRG - Detect Multiplier Change for Register

D1-IntervalChannel
D1-RegisterAutoRead

Measuring Component Type

W1-ADRTDAEGP - Add Retired Asset Entry to General Process

Configuration required (Y) Business Object:

W1-TrackedAsset
W1-Item
W2-CommunicationRelay
W2-ManualMeter
W2-SmartMeter
W2-CommunicationComponent

2.9 Review Asset/Components and Device

Actor/Role: CSR or Authorized User

Description:

CSR or Authorized User reviews Asset/Components and Device to see what needs to be updated

3.0 Upload and Store File

Actor/Role: Object Storage

Description:

For bulk asset/component creation, asset file received from Vendor is uploaded to designated Location in Object Storage.

Note: This is a custom process suggested to process files that contain large number of assets and/or components required to be uploaded in application.

Customizable process Y Process Name:

Custom Process

3.1 Validate File

Actor/Role: C2M (ODM)

Description:

C2M (ODM) performs validation on the file received from vendor.

Note: This is a custom process suggested to process files that contain large number of assets and/or components required to be uploaded in application.

Customizable process Y Process Name:

Custom Process

Inbound Web Service(s):

W1-AssetReplicationActivity

3.2 Analyze Asset(s) or Component(s) and Determine Processing Method

Actor/Role: C2M - ODM

Description:

C2M-ODM analyzes the details in file and determines processing method for bulk asset creation. File structure may vary. Check [Sample File Structure for Bulk Asset Load by Asset type](#) as an example.

Note: This is a custom process suggested to process files that contain large number of assets and/or components required to be uploaded in application.

Customizable process Y	Process Name:	Custom Process
Inbound Web Service(s):		W1-AssetReplicationActivity

3.3 Evaluate and Initiate Mass Asset Disposition Group: Mass Asset Disposition

Actor/Role: C2M (ODM)
Description System can automatically trigger the mass disposition process. C2M will transition the Assets to ‘In-Store’ status when all required information is made available.

Process Plug-in enabled Y	Available Algorithm(s):	W1MADUBPROCR- Mass Asset Disposition Update Process Records
Customizable process N	Process Name:	W1-MADUB - Updates asset records from its current disposition to a new disposition. This is specifically created for the Mass Asset Disposition.

3.4 Highlight Exception(s) Group: Mass Asset Disposition

Actor/Role: C2M (ODM)
Description:
The batch creates an exception for each record with missing or incomplete details.

3.5 Evaluate and Perform Analysis

Actor/Role: C2M (ODM)
Description:
Based on established business rules the Authorized User investigates possible solutions or workarounds for missing or incomplete information.

3.6 Resolve Issue

Actor/Role: C2M (ODM)
Description:
The CSR or Authorized User enters required details to resolve the exception.

3.7 Analyze Requirements Group: Device Configuration Template

Actor/Role: CSR or Authorized User
Description:
When creating a new device online, the authorized user gathers all the required attributes for adding the device.

3.8 Determine Device Type and Populate Data Group: Device Configuration Template

Actor/Role: CSR or Authorized User
Description:
The authorized user analyzes the device information that is provided.

3.9 Request to Create Device Group: Device Configuration Template

Actor/Role: Authorized User

Description:

Authorized User requests to create the Device.

4.0 Review Device Data Group: Device Configuration Template

Actor/Role: Authorized User

Description:

The Authorized User reviews the data after the device has been created.

4.1 Determine Device Configuration Type and Populate Data Group: Device Configuration Template

Actor/Role: Authorized User

Description:

The Authorized User determines the device configuration type and populates the information in C2M (MDM).

4.2 Request to Create Device Configuration Group: Device Configuration Template

Actor/Role: Authorized User

Description:

Authorized User requests to create the Device Configuration.

4.3 Create Device Configuration in Pending Status Group: Device Configuration Template

Actor/Role: C2M (MDM)

Description:

C2M (MDM) creates the Device Configuration in Pending status.

Process Plug-in enabled (Y) Available Algorithm(s):

D1-CHKREQMC - Check if required MC is configured on the DC type
D1-MCTYPVAL - Measuring Component Type Validation
D1-DVCOINFO - Device Configuration Information
D1-USTMCTZDC - Update Channel Statistics MC Time Zone With Device Configuration Time Zone
D1-DELMC - Delete Associated Measuring Components
D1-DEFTIMZON - Default Time Zone value based on Installation Option
D1-INSTDCVAL - Earlier Installed Device Configuration
D1-VALDCTMZN - Validate Device Configuration Time Zone

Business Object (Y)	Business Object	D1-DeviceConfiguration
Configuration required (Y)	Entities to Configure:	Device Configuration Type

Note: This task can be triggered from Manual and automated (Synchronization) processes

4.4 Review Device Configuration Data Group: Device Configuration Template

Actor/Role: Authorized User

Description:

The Authorized User reviews the data after the device configuration has been created or after the device has been updated.

4.5 Determine Measuring Component Type Group: Device Configuration Template

Actor/Role: Authorized User

Description:

The Authorized User determines the measuring component type and populates the information in C2M (MDM).

Note: If the Channel Multiplier field is not populated with data a default of “1.000000” will populate.

If the Measuring Component Type has been configured with Fallback VEE Group for Initial Load, VEE Group for Estimation, and Fallback VEE Group for Manual Override., those fields will be populated if the data is not supplied upon creation.

4.6 Request to Create Measuring Component(s) Group: Device Configuration Template

Actor/Role: Authorized User

Description:

Authorized User requests to create the Measuring Component.

4.7 Review Measuring Component Data Group: Device Configuration Template

Actor/Role: Authorized User

Description:

The Authorized User reviews the data after the measuring component has been created.

4.8 Request to Activate Device Configuration Group: Device Configuration Template

Actor/Role: CSR or Authorized User

Description:

After the device, device configuration, and measuring component have been created, the Authorized User determines if the device configuration need to be “Active”. If so, the Authorized User requests to activate the device configuration using [Device Configuration screen](#)

Note: If the request to activate the device configuration is made before any measuring components have been added, an error message will be created.

4.9 Set Device Configuration Status to Active Group: Device Configuration Template

Actor/Role: CSR or Authorized User

Description:

C2M (MDM) updates Device Configuration with a status of “Active”.

Business Object (Y)	Business Object
---------------------	-----------------

Configuration required (Y) Entities to Configure:

D1-DeviceConfiguration
Device Configuration Type

Note: If the Device Configuration is set to active before any measuring components are created, an error is created.

5.0 Populate Spec Details, Select Required Device Template, Map Device Configuration Group: Link Specification

Actor/Role: CSR or Authorized User

Description:

To create specification Authorized User Populates Specification details and chooses Device configuration and corresponding device template

5.1 Request Create Specification Group: Link Specification

Actor/Role: CSR or Authorized User

Description:

CSR or Authorized User requests to create Specification

5.2 Create Specification Group: Link Specification

Actor/Role: C2M (ODM)

Description:

C2M (MDM) creates the Specification

Process Plug-in enabled (Y) Available Algorithm(s):

W1-VALMANMOD - Validate Manufacturer and Model
W1DEFUSRACCG - Default User Owning Organization
W2-C2MPECVAL - Communication Component Specification Validation
W2-CRSPecVAL - Communication Relay Specification Validation
W2-SMSPECVAL - Smart Meter Specification Validation

Business Object (Y) Business Object

W1-Specification
W2-CommunicationComponentSpec
W2-ManualMeterSpecification
W2-SmartMeterSpecification
W1-ItemSpecification

Configuration Required (Y) Entities to Configure:

W1-AssetType
W1-ComponentType
W1-StorageLocationType
W1-StorageLocation

Manufacturer
Model
Metrology Firmware
NIC Firmware
Device Type
Device Configuration Type
Measuring Component Type
Specification
Template Device

5.3 Populate Asset or Component Information Group: Update Asset

Actor/Role: CSR or Authorized User

Description:

CSR or Authorized User populates Asset information that needs to be updated

5.4 Update Asset Details Group: Update Asset

Actor/Role: C2M (ODM)

Description:

C2M (ODM) updates the Asset with the data provided

Process Plug-in enabled (Y) **Available Algorithm(s):**

W1-VALASTSPC - Validate changes to Asset Specification
W1-ASTDPNAUD - Asset Current Disposition Validation
W2-DEFCONDT - Default Configuration Effective Date Time

Configuration required (Y) **Business Object:**

W1-TrackedAsset
W2-CommunicationRelay
W2-ManualMeter
W2-SmartMeter

Note: Task can be triggered from manual and automated (Synchronization) processes.

5.5 Update Device Details Group: Update Asset

Actor/Role: C2M (MDM)

Description:

C2M (MDM) updates the device with the data provided

Business Object (Y) **Business Object**

D1-SmartMeter

Configuration required (Y) Entities to Configure:

D1-ManualMeter
D1-Item
D1-CommComponentDevice

Device Type
Service Type
Head End System
Lookup: IN_DATA_SHIFT_FLG

5.6 Identify Document(s), Populate Info and Request Create Attachment(s) or Warranty Term Group: Update Asset

Actor/Role: CSR or Authorized User

Description:

CSR or Authorized User reviews Asset and Device that needs to be updated with an Attachment or Warranty Term. User can also add notes to pass specific information to the crew. User request to create Attachment or create Warranty Term in C2M-ODM.

Attachment: System supports several different attachment content types like PDF, Excel, JPEG, Docs and so on. Maximum size limit for the attachment can be defined at Maximum Attachment size within General System Configuration.

Warranty Term: Warranty can be Runtime(Usage Based) or Calendar(Time Based). User create Warranty Term in C2M-ODM in “Created” Status and then has to “Activate” it to link it to Asset.

5.7 Create Attachment(s) or Warranty Term Group: Update Asset

Actor/Role: C2M (ODM)

Description:

C2M (ODM) Create Attachment(s) or Warranty Term.

Business Object (Y) Business Object

C1-AttachmentCharacteristic - Attachment Characteristic
F1-AttachmentPhysicalBO - Physical BO for Attachment
F1-DecRpt - Decision Report
F1-ExcelSpreadsheet - Excel Spreadsheet
F1-GenericAttachment - Generic Attachment - Schema Only
F1-JpegImage - Jpeg Image
F1-MicrosoftVideo - Microsoft Video
F1-Mp3Audio - MP3 Audio
F1-PDF - PDF Document
F1-Text - Text Document
F1-VideoMPEG - Video MPEG

Configuration Required (Y) Entities to Configure:

F1-WavAudio - Wav Audio
F1-WordDocument - Word Document
W1-CalendarWarrantyTerm
W1-RuntimeWarrantyTerm

Feature Configuration > General System Configuration> Maximum Attachment size
Attachment
Warranty Term
Look up> NOTE_TYPE_FLG

5.8 Request Link to Asset Group: Update Asset

Actor/Role: CSR or Authorized User

Description:

CSR or Authorized User request to link Attachment or Warranty Term to Asset. CSR or Authorized User request to add Notes to Asset.

5.9 Link Attachment(s) or Notes(s) or Warranty to Asset Group: Update Asset

Actor/Role: C2M (ODM)

Description:

C2M (ODM) updates the Asset with Attachment(s) or Notes(s) or Warranty

Business Object (Y) Business Object

W1-RuntimeWarranty
W1-CalendarWarranty

Configuration Required (Y) Entities to Configure:

Feature Configuration > General System Configuration> Maximum Attachment size
Attachment
Warranty Term
Look up> NOTE_TYPE_FLG

6.0 Request Remove Attachment or Notes from Asset Group: Update Asset

Actor/Role: CSR or Authorized User

Description:

CSR or Authorized User request to remove Attachment or Warranty Term or Notes from Asset

6.1 Remove Link Between Attachment(s) or Note(s) from Asset Group: Update Asset

Actor/Role: C2M (ODM)

Description:

C2M (ODM) removes Attachment(s) or Notes(s) or Warranty from Asset

Business Object (Y)	Business Object
	W1-RuntimeWarranty
	W1-CalendarWarranty
Configuration Required (Y)	Entities to Configure:
	Feature Configuration > General System Configuration> Maximum Attachment size
	Attachment
	Warranty Term
	Look up> NOTE_TYPE_FLG

6.2 Locate Device Configuration and Populate Data Group: Update Device Configuration

Actor/Role: Authorized User

Description:

Authorized User finds the Device Configuration and populates and/or updates the Device Configuration with the analyzed device configuration requirements.

6.3 Request Device Configuration Update Group: Update Device Configuration

Actor/Role: Authorized User

Description:

Authorized User requests to update the Device Configuration.

6.4 Update Device Configuration Group: Update Device Configuration

Actor/Role: C2M (MDM)

Description:

C2M (MDM) updates Device Configuration with the data provided.

Business Object (Y)	Business Object
	D1-DeviceConfiguration

6.5 Locate MC and Populate Data Group: Update Measuring Component

Actor/Role: Authorized User

Description:

The user finds the device and populates and/or updates the data with the analyzed requirements.

6.6 Request Measuring Component Update Group: Update Measuring Component

Actor/Role: Authorized User

Description:

Authorized User requests to update the [measuring component](#).

6.7 Update Measuring Component Group: Update Measuring Component

Actor/Role: C2M (MDM)

Description:

C2M (MDM) updates the Measuring Component with the data provided.

Business Object (Y)

Business Object

D1-IntervalChannel
D1-Register
D1-RegisterAutoRead
D1-OngoingSyncRequestMC

Note: Task can be triggered from manual and automated (Synchronization) processes

6.8 Select Measuring Component and Update Meter Multiplier

Actor/Role: Authorized User

Description:

Authorized User selects measuring component and updates [meter multiplier](#).

Process Plug-in enabled (Y)

Available Algorithm(s):

D1-DETMULCIC - Detect Multiplier Change for Internal Channel
D1-DETMULCRG - Detect Multiplier Change for Register

Configuration required (Y/N)

Entities to Configure:

Meter Multiplier

6.9 Update Measuring Component

Actor/Role: C2M (MDM)

Description:

C2M (MDM) updates Measuring Component and meter multiplier information.

7.0 Select Install Event and Update Installation Constant

Actor/Role: Authorized User

Description:

Authorized User selects Install Event and updates [Installation Constant](#).

Process Plug-in enabled (Y)

Available Algorithm(s):

D1-DETIECHG - Detect Installation Constant Change for Install Event

Configuration required (Y/N)

Entities to Configure:

Installation Constant

7.1 Update Install Event

Actor/Role: C2M (MDM)

Description:

C2M (MDM) updates Install Event and Installation Constant information.

7.2 Validate Eligibility to Re-process Measurement

Actor/Role: C2M (MDM)

Description:

C2M (MDM) validates the eligibility to re-process measurement. C2M (MDM) validates that there is a change between the old value and the new multiplier or installation constant value and if the new value is different it next determines the period affected by the change.

Further, it validates that there are no other in-progress Activities for the same Activity type and MC. This is intended to prevent a user from creating a new Activity that will be in conflict with any existing system-generated Measurement Reprocessing Activity. There will be only one Activity created for Measuring Component.

Process Plug-in enabled (Y/N) **Available Algorithm(s):**

D1-MRACTINFO (Measurement Reprocess Activity Information)
D1-VALUNIQ (Validate Uniqueness)

Business Object (Y/N) **Business Object**

D1-MeasurementReprocessParent
D1-MeasurementReprocessScalar
D1-MeasurementReprocesInterval

7.3 Create Measurement Reprocessing Activity in Pending State

Actor/Role: C2M (MDM)

Description:

C2M (MDM) creates measurement reprocessing activity in 'Pending' state. Prior to creation it pre-processes to determine the Activity Type and to generate a GUID i.e. a unique ID for the reprocessing activity. C2M (MDM) auto-transitions measurement reprocessing activity to next state based on evaluation. A batch monitor may be scheduled in the rare case when measurement reprocessing activity encounters error during auto-transition to next state and stays in 'Pending' state.

Process Plug-in enabled (Y/N) **Available Algorithm(s):**

D1-DETMRAPPR - Determine Measurement Reprocessing Approval
D1-POPGUID (Populate GUID)

Business Object (Y/N) **Business Object**

D1-MeasurementReprocessParent
D1-MeasurementReprocessScalar
D1-MeasurementReprocesInterval

7.4 Evaluate Criteria for Approval

Actor/Role: C2M (MDM)

Description:

C2M (MDM) evaluates criteria for approval. C2M (MDM) checks the Measurement Reprocessing [Activity Type](#) configuration for whether 'Approval required?' is set. If set to "No", then the Activity will move on to the 'Ready for Processing' status. If set to "Yes", then the logic checks if any of the 'Preapproved Percentages' are set on the Measurement Reprocessing Activity Type. If the 'Preapproved Percentages' are set then those are compared to the Multiplier or Installation Constant percentage of change that originally initiated the Activity. If the percentage of change falls outside of the 'Preapproved Percentages' or they aren't populated, then a manual approval is required.

Process Plug-in enabled (Y/N)	Available Algorithm(s):	D1-DETMRAPPR (Determine Measurement Reprocessing Approval)
Business Object (Y/N)	Business Object	D1-MeasurementReprocessParent
		D1-MeasurementReprocessScalar
		D1-MeasurementReprocesInterval
Configuration required (Y/N)	Entities to Configure:	Activity Type for Measurement Reprocessing - Scalar
		Activity Type for Measurement Reprocessing - Interval

7.5 Create To Do for Approval and Transition to Approval Required State

Actor/Role: C2M (MDM)

Description:

C2M (MDM) creates 'To Do' for approval required and transitions to 'Approval required' state.

Process Plug-in enabled (Y/N)	Available Algorithm(s):	D1-MRAPPTODO (Create Measurement Reprocessing Requiring Approval To-Do Entry)
Business Object (Y/N)	Business Object	D1-MeasurementReprocessParent
		D1-MeasurementReprocessScalar
		D1-MeasurementReprocesInterval
Configuration required (Y/N)	Entities to Configure:	To Do Type and Role in Activity Type

7.6 Review Change

Actor/Role: Authorized User (Approver)

Description:

Authorized User (Approver) reviews the change and the update performed on Meter Multiplier of Installation Constant.

7.7 Request to Approve

Actor/Role: Authorized User (Approver)

Description:

Authorized User (Approver) makes a request to approve the measurement reprocessing activity.

7.8 Complete To Do

Actor/Role: C2M (MDM)

Description:

C2M (MDM) completes 'To Do' created.

Process Plug-in enabled (Y/N)	Available Algorithm(s):	D1-GTDCBO (Generic To-Do Completion for BOs)
Business Object (Y/N)	Business Object	D1-MeasurementReprocessParent
		D1-MeasurementReprocessScalar
		D1-MeasurementReprocesInterval

7.9 Update Measurement Reprocessing Activity to Ready for Processing State

Actor/Role: C2M (MDM)

Description:

C2M (MDM) updates measurement reprocessing activity to 'Ready for Processing' state.

Business Object (Y/N)	Business Object	D1-MeasurementReprocessParent
		D1-MeasurementReprocessScalar
		D1-MeasurementReprocesInterval
Customizable process (Y/N)	Process Name	D1-MRAC (Measurement Reprocessing Monitor)

8.0 Request to Discard

Actor/Role: Authorized User (Approver)

Description:

Authorized User can make a request to discard measurement reprocessing activity.

Note: An activity discarded stays in database and is not completely removed from system.

8.1 Discard Measurement Reprocessing Activity

Actor/Role: C2M (MDM)

Description:

C2M (MDM) discards measurement reprocessing activity.

8.2Analyze Measurement Reprocessing

Actor/Role: Authorized User

Description:

Authorized User analyzes measurement reprocessing activity.

8.3 Request to Process

Actor/Role: Authorized User

Description:

Authorized User makes a request to process measurement reprocessing activity.

8.4 Transition to Process State

Actor/Role: C2M (MDM)

Description:

C2M (MDM) transitions measurement reprocessing activity to 'Process' state.

Business Object (Y/N)

Business Object

D1-MeasurementReprocessParent
D1-MeasurementReprocessScalar
D1-MeasurementReprocesInterval

8.5 Transition to Processing

Actor/Role: C2M (MDM)

Description:

C2M (MDM) transitions measurement reprocessing activity to Process State. A batch monitor is configured here to monitor and take forward the processing of measurement reprocessing activity towards initiating the creation of IMD Seeder for reprocessing.

Business Object (Y/N)

Business Object

D1-MeasurementReprocessParent
D1-MeasurementReprocessScalar
D1-MeasurementReprocesInterval

Customizable process (Y/N)

Process Name

D1-MRAC (Measurement Reprocessing Monitor)
--

8.6 Initiate IMD seeder Creation

Actor/Role: C2M (MDM)

Description:

C2M (MDM) initiates the creation of IMD Seeder. C2M (MDM) identifies the type of measuring component and initiate IMD creation specific to scalar or interval channel. In case of Install Event, it determines the measuring components associates and accordingly initiates the creation.

C2M (MDM) looks for the measurements in the effective period to populate the new IMDs. If the Measurement Reading isn't populated, then C2M (MDM) will look to the original IMD linked to the Measurement in order to pull the reading required for the new IMD. If neither exist, then the Measurement reprocessing will be skipped.

Process Plug-in enabled (Y/N) **Available Algorithm(s):**

D1-REPSCMSRS (Reprocess Scalar Measurements)
D1-REPINMSRS (Reprocess Interval Measurements)

Business Object (Y/N) **Business Object**

D1-MeasurementReprocessParent
D1-MeasurementReprocessScalar
D1-MeasurementReprocesInterval
D1-IMDSeeder
D1-SystemIMDSector
D1-SystemIMDInterval

8.7 Create To Do in Issue Detected State and Perform Exception Process

Actor/Role: C2M (MDM)

Description:

C2M (MDM) creates a To Do for issues encounters during the creation of IMDs and transitions the measurement reprocess activity to 'Issue Detected' state. The User can perform the standard exception process in terms of analyzing the To Do for the error and request C2M (MDM) to either initiate to reprocess or discard.

If the User doesn't take any action, the measurement reprocess activity in 'Issue Detected' state is reprocessed through a batch scheduler. Finally, it is rejected by the system.

Process Plug-in enabled (Y/N) **Available Algorithm(s):**

D1-WTTMOUT (Wait Time Out - Transition to Rejection)
D1-RBOE (Retry BO in Error)
D1-GTDCBO (Generic To-Do Completion for BOs)
D1-CTDEBOE - Create To Do Entry for BO in Error

Business Object (Y/N) **Business Object**

D1-MeasurementReprocessParent
D1-MeasurementReprocessScalar
D1-MeasurementReprocesInterval

Customizable process (Y/N) **Process Name**

D1-MRER (Measurement Reprocessing - Retry Monitor)
--

8.8 Complete Measurement Reprocessing Activity

Actor/Role: C2M (MDM)

Description:

C2M (MDM) completes measurement reprocessing activity. In parallel, the IMD Creation process continues. Please refer to process 4.2.1.1 C2M. Upload Device Measurements. System IMD for more details.

Process Plug-in enabled (Y/N) **Available Algorithm(s):**

D1-REPSCMSRS (Reprocess Scalar Measurements)
D1-REPINMSRS (Reprocess Interval Measurements)

Business Object (Y/N) **Business Object**

D1-MeasurementReprocessParent
D1-MeasurementReprocessScalar
D1-MeasurementReprocesInterval

8.9 Search for Component

Actor/Role: CSR or Authorized User

Description:

The Authorized User searches for the given Device(Component) in C2M to determine if it is in existing inventory. Searching for the Device can be accomplished through Device Search using various search criteria.

9.0 Search for Asset(Device)

Actor/Role: CSR or Authorized User

Description:

The Authorized User searches for the given Device(Actual Meter) in C2M to determine if it is in existing inventory. Searching for the Device can be accomplished through Device Search using various search criteria.

9.1 Analyze Requirement

Actor/Role: CSR or Authorized User

Description:

When attaching Component to Device, the CSR or Authorized User gathers all the required attributes.

9.2 Populate Required Data, Eff. Date/Time of Attaching Component to Asset Group: Attach Component

Actor/Role: CSR or Authorized User

Description:

The CSR or Authorized User enters the required effective date and time of attaching the Component to the Asset.

Note: For pre-assembled meters where components are attached to meter before installation, Asset(Device) should be in 'In-Store' Status.

Component can also be attached to installed device. In this case, Device serves as the primary device and component is not linked to the service point.

9.3 Request Attach Component to Asset Group: Attach Component

Actor/Role: CSR or Authorized User

Description:

The CSR or Authorized User request to attach Asset (Component) to Asset (Device)

9.4 Evaluate Eligibility to Attach Component to Asset (Device) Group: Attach Component

Actor/Role: C2M(MDM)

Description:

C2M(MDM) checks if the component is a valid attachment to the device Asset type

Process Plug-in enabled (Y/N) **Available Algorithm(s):**

W2-CMPATTVLD (Communication Component Enter Attached Validation)
--

Configuration required Y **Entities to Configure:**

Asset Type
Component Type
Template Asset
W1-StorageLocationType
W1-StorageLocation

9.5 Update Asset(Component) Status to Attached and Update Disposition Group: Attach Component

Actor/Role: C2M(ODM)

Description:

C2M(ODM) transitions the asset status to Attached and updates disposition location accordingly

Process Plug-in enabled (Y/N) **Available Algorithm(s):**

W2-CMPATTVLD (Communication Component Enter Attached Validation)
--

Business Object (Y/N) **Business Object**

W2-CommunicationComponent
W1-ComponentType

Configuration required Y **Entities to Configure:**

Extendable Lookup (Asset/Device Status)
Asset Type
Component Type
Template Asset
W1-StorageLocationType
W1-StorageLocation

Test Assets related to the Current Process

Testing Asset Sr.No	Testing Asset-Flows	No Of Data sets
1	URM-C2M-5631-001-Create-Manual-Asset-In-Receipt-Status	3
2	URM-C2M-5631-002-Create-Manual-Asset-In-Store-Status	3
3	URM-C2M-5631-003-Create-Manual-Asset-In-Rejected-Status	3
4	URM-C2M-5631-004-Update-Asset-Only-DevConfig-And-MC-Update-Not-Required	2
5	URM-C2M-5631-005-Update-Asset-And-DevConfig-Only-MC-Update-Not-Required	2
6	URM-C2M-5631-006-Update-Asset-DevConfig-And-MC	2
7	URM-C2M-5631-007-Create-Smart-Device-Asset-InReceipt-Status	2
8	URM-C2M-5631-008-Create-Smart-Device-Asset-InStore-Status	2
9	URM-C2M-5631-009-Create-Smart-Device-In-Rejected-Status	2
10	URM-C2M-5631-010-Update-Smart-Asset-DevConfig-And-MCUpdate-Not-Required	2
11	URM-C2M-5631-011-Update-Smart-Electric-Asset-And-DevConfig-Only-MCUpdate-Not-Required	2
12	URM-C2M-5631-012-Update-Smart-Asset-DevConfig-And-MC	2
13	URM-C2M-5631-013-Create-Item-Asset-InReceipt-Status	2
14	URM-C2M-5631-014-Create-Item-Asset-InStore-Status	2
15	URM-C2M-5631-015-Create-Item-Asset-InRejected-Status	2
16	URM-C2M-5631-016-Update-Item-Asset-DevConfig-And-MCUpdate-Not-Applicable	2
17	URM-C2M-5631-017-Create-Component-Asset-InReceipt-Status	3
18	URM-C2M-5631-018-Create-Component-Asset-InStore-Status	3
19	URM-C2M-5631-019-Create-Component-Asset-InRejected-Status	3
20	URM-C2M-5631-020-Update-Component-Asset-DevConfig-And-MCUpdate-Not-Applicable	2

Document Control**Change Record**

Date	Author	Version	Change Reference
7/26/2019	Don Lee	1	Initial draft
9/18/2019	Satya Kalavala	2	Initial draft updated
9/24/2019	Satya Kalavala	3	Updates to previous version
9/25/2019	Jerry Chick	4	Various grammatical and syntax corrections
10/10/2019	Galina Polonsky		Reviewed, approved
10/05/2020	Anosh Mehdi	5	Updates to previous version
30/05/2020	Galina Polonsky		Reviewed, approved
03/20/2024	Kunal Nerkar		Revised for C2M v2.9
03/29/2024	Ashish Shukla		Reviewed
12/18/2024	Galina Polonsky		Reviewed, Approved

Attachments:

Asset Add/Update/Delete

Add Asset:

Business

Main

General

BUSINESS C

DESCRIPTION

OWNER

Business

FILTERS: B

	B
1	Q

Lifecycle

NO LIFECYC

Options

Add Asset

MAIN ⓘ

EFFECTIVE DATE/TIME

10-25-2022 ⓘ 9:22:34 ⓘ

ASSET TYPE

Electric Smart Meter - LG ⌵

ASSET DISPOSITION

In Receipt

OUT OF SERVICE LOCATION

* Pleasanton Receiving,5805 Owens Dr. ⌵

OK

Cancel

Home

Menu

Admin

Search Menu

History

Control Central Search

Account Information

Business

Main

General Information

BUSINESS C

DESCRIPTIO

OWNER

Business

FILTERS: B

1

Lifecycle

NO LIFE CY

Options

Busine

Rules

Busine

Smart Meter

Main

ASSET TYPE

Electric Smart Meter - LG

DETAILED DESCRIPTION

TEST

ASSET ORIGIN DATE/TIME

10-25-2022 9:23:57

ASSET OWNERSHIP

SPECIFICATION

ZZ L + G E330/E350 FOCUS AX

Access Control

OWNING ORGANIZATION

Identification

BADGE NUMBER

TEST-101

SERIAL NUMBER

TEST-101

PALLET NUMBER

PO NO

Settings

METROLOGY FIRMWARE VERSION

2.2.0

NIC FIRMWARE VERSION

2.2.0

NIC IDENTIFIER

MEASUREMENT CONFIGURATION

Electric Auto Read - kWh - 60 min intervals

CONFIGURATION EFFECTIVE DATE/TIME

Operational Device Vendor

Purchase Order Information

Save

Cancel

Current To Do

In Receipt Status

Asset: Electric Smart Meter - LG, TEST-101, TEST-101, TEST

AddSearchBookmarkRefresh

MainDeviceMaintenanceTree ViewStatisticsAsset DispositionAsset PerformanceLog

Asset

Main

INFORMATION

Electric Smart Meter - LG, TEST-101, TEST-101, TEST

ASSET TYPE

Electric Smart Meter - LG

DETAILED DESCRIPTION

TEST

STATUS

In Receipt

ASSET OWNERSHIP

DEVICE

SPECIFICATION

ZZ L + G E330/E350 FOCUS AX

Identification

BADGE NUMBER

TEST-101

SERIAL NUMBER

TEST-101

PALLET NUMBER

PO NO

EXTERNAL ID

Settings

METROLOGY FIRMWARE VERSION

2.2.0

NIC FIRMWARE VERSION

2.2.0

NIC IDENTIFIER

MEASUREMENT CONFIGURATION

Electric Auto Read - kWh - 60 min intervals

CONFIGURATION EFFECTIVE DATE/TIME

10-25-2022 9:22:34

Record Actions

EditDeleteView in MapDuplicate

StoreRejectChange LocationReset Asset Condition

Record Information

Access Control

OWNING ORGANIZATION

System Default

Asset Disposition Detail

ASSET DISPOSITION

In Receipt

EFFECTIVE DATE/TIME

10-25-2022 9:22:34

LOCATION

Receiving, Pleasanton Receiving, 5805 Owens Dr., Pleasanton, CA, USA, Time Zone: US Pacific Time

Assessment

CONDITION RATING

0.00

CONFIDENCE RATING

0.00

Operational Device Vendor

WARRANTY EXPIRATION DATE

WARRANTY DETAIL

DEVICE VENDOR

DEVICE PART NO

Purchase Order Information

VENDOR

VENDOR LOCATION

VENDOR PART NUMBER

PURCHASE ORDER LINE

ORIGINAL COST

ORIGINAL PO DATE

5.6.3.1 C2M.Manage Tracked Assets and Devices

Copyright © 2024, Oracle. All rights reserved.

41

In Store Status

Asset: Electric Smart Meter - LG, TEST-101, TEST-101, TEST

AddSearchBookmarkRefresh

MainDeviceMaintenanceTree ViewStatisticsAsset DispositionAsset PerformanceLog

Asset

Main

INFORMATION

ASSET TYPE

DETAILED DESCRIPTION

STATUS

ASSET OWNERSHIP

DEVICE

SPECIFICATION

Identification

BADGE NUMBER

SERIAL NUMBER

PALLET NUMBER

PO NO

EXTERNAL ID

Electric Smart Meter - LG, TEST-101, TEST-101, TEST

Electric Smart Meter - LG

TEST

In Receipt

ZZ L + G E330/E350 FOCUS AX

TEST-101

TEST-101

Record Actions

EditDeleteDuplicate

StoreRejectChange Location

Record Information

Access Control

OWNING ORGANIZATION

System Default

Asset Disposition Detail

ASSET DISPOSITION

In Receipt

EFFECTIVE DATE/TIME

10-25-2022 9:22:34

LOCATION

Receiving, Pleasanton Receiving, 5805 Owens Dr., Pleasanton, CA, Time Zone: US Pacific Time

WARRANTY DETAIL

DEVICE VENDOR

DEVICE PART NO

Purchase Order Information

VENDOR

VENDOR LOCATION

VENDOR PART NUMBER

PURCHASE ORDER LINE

Attached Components

Asset New Location - Profile 1 - Microsoft Edge

https://opd.utilities-cloud.oracleindustry.com/z691r2/dev01/ccs/web/usermap?language=ENG

New Location

EFFECTIVE DATE/TIME

10-25-2022 9:26:45

ASSET DISPOSITION

In Store

OUT OF SERVICE LOCATION

5.6.3.1 C2M.Manage Tracked Assets and Devices

Asset: Electric Smart Meter - LG, TEST-101, TEST-101, TEST

MainDeviceMaintenanceTree ViewStatisticsAsset DispositionAsset PerformanceLog

Asset

Main

INFORMATION

Electric Smart Meter - LG, TEST-101, TEST-101, TEST

ASSET TYPE

Electric Smart Meter - LG

DETAILED DESCRIPTION

TEST

STATUS

In Store

ASSET OWNERSHIP

DEVICE

TEST-101 / Electric Smart Meter / Sensus / Active

SPECIFICATION

ZZ L + G E330/E350 FOCUS AX

Identification

BADGE NUMBER

TEST-101

SERIAL NUMBER

TEST-101

PALLET NUMBER

PO NO

EXTERNAL ID

261665673000

Settings

METROLOGY FIRMWARE VERSION

2.2.0

NIC FIRMWARE VERSION

2.2.0

NIC IDENTIFIER

MEASUREMENT CONFIGURATION

Electric Auto Read - kWh - 60 min intervals

CONFIGURATION EFFECTIVE DATE/TIME

10-25-2022 9:22:34

Record Actions

EditDeleteView in MapDuplicate

RepairRetireRejectPending Disposition

Change LocationReset Asset Condition

Record Information

Access Control

OWNING ORGANIZATION

System Default

Asset Disposition Detail

ASSET DISPOSITION

In Store

EFFECTIVE DATE/TIME

10-25-2022 9:26:45

LOCATION

Storeroom, Pleasanton Satellite Storeroom, 5815 Owens Drive, Pleasanton, CA, 94588, USA, Time Zone: US Pacific Time

Assessment

CONDITION RATING

0.00

CONFIDENCE RATING

0.00

Operational Device Vendor

WARRANTY EXPIRATION DATE

WARRANTY DETAIL

DEVICE VENDOR

DEVICE PART NO

Purchase Order Information

VENDOR

VENDOR LOCATION

VENDOR PART NUMBER

PURCHASE ORDER LINE

ORIGINAL COST

ORIGINAL PO DATE

Alerts

Full Context

Electric Smart Meter - LG, TEST-101, TEST-101, TEST

Receiving, Pleasanton Receiving, 5805 Owens Dr., Pleasanton, CA, USA, Time Zone: US Pacific Time

Current To Do

Assign me a To Do

Financial Information

Override System Date

PROCESS DATE

2022-10-25

OVERRIDE DATE

UserSystem

C2M Demo Scenarios

LOAD DEMO SCENARIO

Adjustment Approval: Martha Turner

All Services: Maria Villa

Alternate Currency Payments: Loaf and Jug

Backflow Preventer: Mark Brazil

Budget (Default Amount): Angel Hernandez

Collection Process: Matthew Dailey

Deposit (Default Amount): Peter Watson

DSS - Electric (Interval) and Water/Waste Water: Ella Watts

DSS - Electric only - Interval: Gina Elliot

DSS - Gas only: Paul Gardner

DSS - Water and sewer only: William Walter

Electric and Gas: Peggy Schneider

Electric Vehicle Billing: Bob Jones

Gas Module: Molly Monroe

Gas VEE Exception: Gilbert Cohen

General Account: Charlie Ruppert

General Account: David Brandon

General Account: Mark Brazil

Interval Pricing: Canton Bakery

Asset Delete

Asset: Electric Smart Meter - LG, 2345432454321, test21

Main

Device

Maintenance

Tree View

Statistics

Asset Disposition

Asset Performance

Log

Asset

Main

INFORMATION

ASSET TYPE

DETAILED DESCRIPTION

STATUS

STATUS REASON

ASSET OWNERSHIP

DEVICE

SPECIFICATION

Identification

BADGE NUMBER

SERIAL NUMBER

PALLET NUMBER

PO NO

EXTERNAL ID

Settings

METROLOGY FIRMWARE

VERSION

Electric Smart Meter - LG, 2345432454321, test21

Electric Smart Meter - LG

Rejected

Tracked Asset Inventory Adjustment [CDM]

ZZ L + G E330/E350 FOCUS AX

test21

2345432454321

2.2.0

Record Actions

Edit

Delete

Duplicate

Transition 1

Change Location

Record Information

Access Control

OWNING ORGANIZATION

System Default

Asset Disposition Detail

ASSET DISPOSITION

Rejected

EFFECTIVE DATE/TIME

10-26-2022 8:29:45

LOCATION

Inspection Shop, Pleasanton Inspection Shop, 5815 Owens Drive, Pleasanton, CA, 94588, USA, Time Zone: US Pacific Time

Assessment

CONDITION RATING

0.00

CONFIDENCE RATING

0.00

Asset Update

Asset: Electric Smart Meter

Main

Asset

Main

INFORMATION

ASSET TYPE

DETAILED DESCRIPTION

ASSET ORIGIN DATE/TIME

ASSET OWNERSHIP

SPECIFICATION

Access Control

OWNING ORGANIZATION

Identification

BADGE NUMBER

SERIAL NUMBER

PALLET NUMBER

Settings

METROLOGY FIRMWARE

VERSION

Smart Meter

Electric Smart Meter - LG, TEST-101, TEST-101, TEST

Electric Smart Meter - LG

TEST Update

10-25-2022 9:25:35

ZZ L + G E330/E350 FOCUS AX

System Default

TEST-101

TEST-101

Assessment

5.6.3.1 C2M.Manage Tracked Assets and Devices

Asset: Electric Smart Meter - LG, TEST-101, TEST-101, TEST Update

Add

Search

Bookmark

Refresh

Main

Device

Maintenance

Tree View

Statistics

Asset Disposition

Asset Performance

Log

Asset

Main

INFORMATION

ASSET TYPE

DETAILED DESCRIPTION

STATUS

ASSET OWNERSHIP

DEVICE

SPECIFICATION

Identification

BADGE NUMBER

SERIAL NUMBER

PALLET NUMBER

PO NO

EXTERNAL ID

Settings

METROLOGY FIRMWARE

Electric Smart Meter - LG, TEST-101, TEST-101, TEST Update

Electric Smart Meter - LG

TEST Update

In Store

TEST-101 / Electric Smart Meter / Sensus / Active

ZZ L + G E330/E350 FOCUS AX

TEST-101

TEST-101

261665673000

Record Actions

Edit

Delete

Duplicate

Repair

Retire

Reject

Pending Disposition

Change Location

Record Information

Access Control

OWNING ORGANIZATION

Asset Disposition Detail

ASSET DISPOSITION

EFFECTIVE DATE/TIME

LOCATION

Assessment

In Store

10-25-2022 9:26:45

Storeroom, Pleasanton Satellite Storeroom, 5815 Owens Drive, Pleasanton, CA, 94588, USA, Time Zone: US Pacific Time

Asset: Electric Smart Meter - LG, TEST-101, TEST-101, TEST

Add

Search

Bookmark

Refresh

Main

Device

Maintenance

Tree View

Statistics

Asset Disposition

Asset Performance

Log

Asset Service History

No Results.

Measurements

Maintenance Trigger

Asset List Maintenance Trigger

Maintenance Schedule Forecast

Activity History

0 Results. Page 1 of 1 (0 records).

INCLUDE PREVENTIVE MAINTENANCE WO

Yes

ACTIVITY TYPE

Inspect Meter

5.6.3.1 C2M.Manage Tracked Assets and Devices

Copyright © 2024, Oracle. All rights reserved.

45

Asset Specifications

Add Specification

Choose Type of Specification Business Object

Asset: Ele

Select Business Object

Main

Asset

Main C

INFORM

ASSET T

DETAIL

STATUS

ASSET C

DEVICE

SPECIF

Identif

BADGE

SERIAL

PALLET

PO NO

EXTERN

Settings

SPECIFICATION BUSINESS OBJECT

Analog Meter Specification

OK

Cancel

Analog Meter Specification
Communication Component Specification
Communication Relay Specification
Controllable Asset Specification
Current Transformer Specification
Firmware Specification
Fleet Specification
General Specification
IT Specification
Infrastructure Specification
Item Specification
Landis Gyr Electric Smart Meter Specification
Smart Meter Specification

Label and choose Configuration from device configuration

Asset: Ele

Main

Asset

Main C

INFORM

ASSET T

DETAIL

STATUS

ASSET C

DEVICE

SPECIF

Identif

BADGE

SERIAL

PALLET

PO NO

EXTERN

Settings

MAIN

SPECIFICATION

DESCRIPTION

ASSET TYPE

MANUFACTURER

Access Control

OWNING ORGANIZATION

Detail

MODEL

Configuration Mapping

Attributes

SPECIFICATION

TEST

DESCRIPTION

TEST

ASSET TYPE

Electric Analog Meter

MANUFACTURER

OWNING ORGANIZATION

System Default

MODEL

Configuration Mapping

	CONFIGURATION	DEVICE IDENTIFIER TYPE	IDENTIFIER VALUE
+	Electric Manual Read - kWh - Scalar	Badge Number	ER-1000002

Attributes

DRIVE RATE

Specification

Specification: TEST

Add

Search

Bookmark

Refresh

Main

Specification

Main

SPECIFICATIONTEST

DESCRIPTIONTEST

ASSET TYPEElectric Analog Meter

MANUFACTURER

Detail

MODEL

Configuration Mapping

CONFIGURATION	DEVICE IDENTIFIER TYPE	IDENTIFIER VALUE
Electric Manual Read - kWh - Scalar	Badge Number	ER-1000002

Record Actions

Edit

Delete

Duplicate

Record Information

OWNING ORGANIZATIONSystem Default

Attributes

DRIVE RATE

Warranty Terms

Add

Attachments

Attach

Add File

Add URL

Reject Asset:

In Receipt

Asset: Electric Smart Meter - LG, 2345432454321, test21

Add

Search

Bookmark

Refresh

Main

Device

Maintenance

Tree View

Statistics

Asset Disposition

Asset Performance

Log

Asset

Main

INFORMATIONElectric Smart Meter - LG, 2345432454321, test21

ASSET TYPEElectric Smart Meter - LG

DETAILED DESCRIPTION

STATUSIn Receipt

ASSET OWNERSHIP

DEVICE

SPECIFICATIONZZ L + G E330/E350 FOCUS AX

Identification

BADGE NUMBERtest21

SERIAL NUMBER2345432454321

PALLET NUMBER

PO NO

EXTERNAL ID

Settings

METROLOGY FIRMWARE VERSION2.2.0

NIC FIRMWARE VERSION2.2.0

Record Actions

Edit

Delete

Duplicate

Store

Reject

Change Location

Record Information

OWNING ORGANIZATIONSystem Default

Asset Disposition Detail

ASSET DISPOSITIONIn Receipt

EFFECTIVE DATE/TIME10-21-2022 7:25:02

LOCATIONReceiving, Pleasanton Receiving, 5805 Owens Dr., Pleasanton, CA, USA, Time Zone: US Pacific Time

Assessment

CONDITION RATING0.00

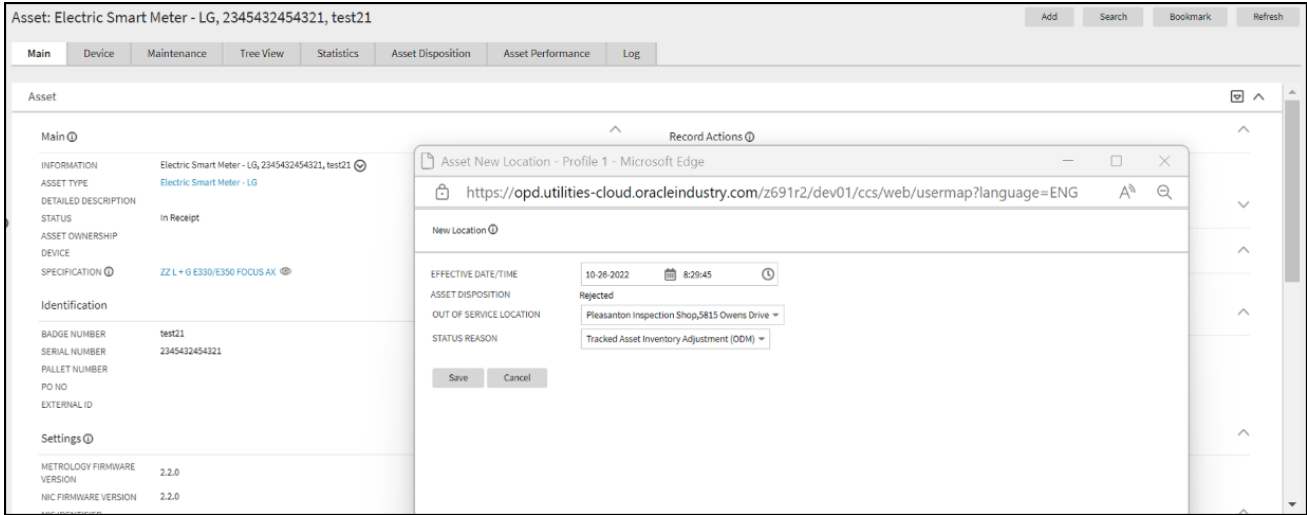
CONFIDENCE RATING0.00

5.6.3.1 C2M.Manage Tracked Assets and Devices

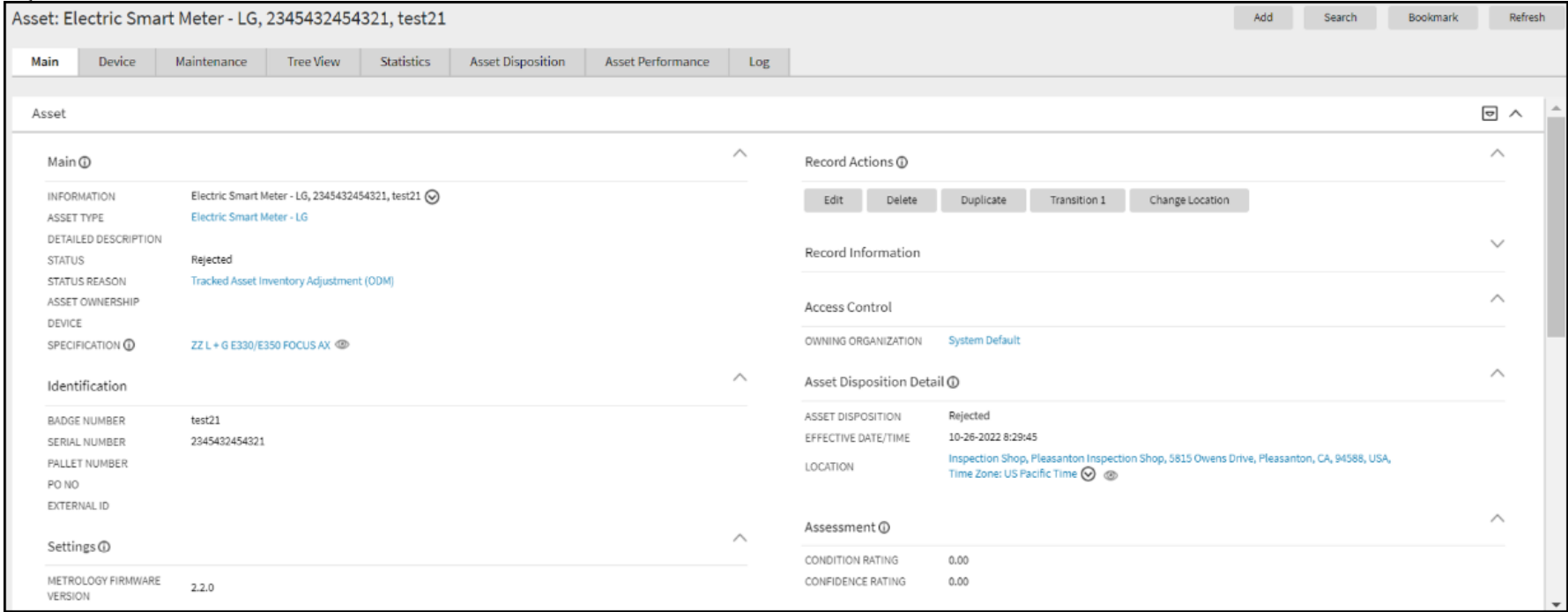
Copyright © 2024, Oracle. All rights reserved.

47

5.6.3.1 C2M.Manage Tracked Assets and Devices



Reject:



New Device (Template)

Template Device Creation

Device Add – Test-Add

Device Type: TEST Electric Manual Read Meter - Analog

Main

	7	400W-SV	Electric Item - 400 Watt Sodium Vapor	Electric			
	8	1000W-MV	Electric Item - 1000 Watt Mercury Vapor	Electric			
	9	1000W-SV	Electric Item - 1000 Watt Sodium Vapor	Electric			

Device Type

Main

DEVICE TYPE

TESTADD

DESCRIPTION

TEST Electric Manual Read Meter - Analog

DEVICE BUSINESS OBJECT

Manual Meter

SERVICE TYPE

Electric

SERVICE PROVIDER

TRACK LOCATION

Tracked by ODM

DEVICE CLASSIFICATION ⓘ

Meter

Record Actions ⓘ

EditDeleteDuplicate

Record Information

Valid Device Configuration Types ⓘ

DEVICE CONFIGURATION TYPE

Electric Auto Read - kWh - ScalarTESTDC

Device Type Characteristics

FILTERS: DEVICE TYPE TESTADD

Device: TEST

Main

Device

Main

INFORM

Select Type

DEVICE TYPE

TEST Electric Manual Read Meter - Analog

OK

Cancel

Device: TEST

Main

Device

Main

INFORM

DEVICE T

SERIAL N

BADGE N

STATUS

MANUFA

MODEL

ACCESS

Device

EQUIPM

Device C

Device A

Manual Meter

Main

DEVICE TYPE

TEST Electric Manual Read Meter - Analog

SERIAL NUMBER

TEST-ADD

BADGE NUMBER

TEST-ADD

INTERNAL METER NUMBER

PALLET NUMBER

EXTERNAL ID

MDM EXTERNAL ID

NIC IDENTIFIER

ASSET ID

MANUFACTURER

Landis + Gyr

MODEL

E331/E351 FOCUS AXe/AXRe/RXRe (Smart)

SPECIFICATION

CONFIGURATION

Device Equipment

	EQUIPMENT	ATTACH DATE/TIME	DETACH DATE/TIME	MEASURING COMPONENT	COMMENTS	CREW

Device: TEST-ADD / TEST Electric Manual Read Meter - Analog / Active

MainLog

Device

Main ⓘ

INFORMATIONTEST-ADD / TEST Electric Manual Read Meter - Analog / Active ⌵

DEVICE TYPETEST Electric Manual Read Meter - Analog

SERIAL NUMBERTEST-ADD

BADGE NUMBERTEST-ADD

STATUSActive

MANUFACTURERLandis + Gyr

MODELE331/E351 FOCUS AXe/AXRe/RXRe (Smart)

ACCESS GROUP

Record Actions ⓘ

EditDeleteRetire

Record Information

Device Equipment ⓘ

EQUIPMENT	ATTACH DATE/TIME	DETACH DATE/TIME	MEASURING COMPONENT	COMMENTS	CREW
-----------	------------------	------------------	---------------------	----------	------

Device Configuration List ⓘ

Device Attachments ⓘ

Device Activities ⓘ

Device Configuration Add

Device: TEST

Device Configuration

Main

Device

Main

INFORMATION

DEVICE TYPE

SERIAL NUMBER

BADGE NUMBER

STATUS

MANUFACTURER

MAIN

DEVICE CONFIGURATION TYPE

DEVICE ID

EXTERNAL ID

MDM EXTERNAL ID

EFFECTIVE DATE/TIME

TIME ZONE

Save

Cancel

TESTDC

033128119446

TEST-ADD / TEST Electric Manual Read Meter - Analog / Active

10-26-2022 0:00:00 PDT

US Pacific Time

Creates in Pending Status

Device Configuration: TEST Electric Manual Read Meter - Analog / Effective Date/Time:10-26-2022 0:00:00 PDT / TESTDC / 0 Measuring Component(s) / Pending

Main	Log
Device Configuration	
Main	
INFORMATION	TEST Electric Manual Read Meter - Analog / Effective Date/Time:10-26-2022 0:00:00 PDT / TESTDC / 0 Measuring Component(s) / Pending
DEVICE CONFIGURATION TYPE	TESTDC
DEVICE	TEST-ADD / TEST Electric Manual Read Meter - Analog / Active
EFFECTIVE DATE/TIME	10-26-2022 0:00:00 PDT
TIME ZONE	US Pacific Time
STATUS	Pending
Measuring Components	

Add Measuring component and Press Activate – Configuration becomes Active

Device Configuration: TEST Electric Manual Read Meter - Analog / Effective Date/Time:10-26-2022 0:00:00 PDT / TESTDC / 1 Measuring Component(s) / Active

MainLog

Device Configuration

Main ⓘ

Record Actions ⓘ

INFORMATION

TEST Electric Manual Read Meter - Analog / Effective Date/Time:10-26-2022 0:00:00 PDT / TESTDC / 1 Measuring Component(s) / Active ⓘ

Edit

Delete

Record Information ⓘ

DEVICE CONFIGURATION TYPE

TESTDC

DEVICE

TEST-ADD / TEST Electric Manual Read Meter - Analog / Active ⓘ

EFFECTIVE DATE/TIME

10-26-2022 0:00:00 PDT

TIME ZONE

US Pacific Time

STATUS

Active

Measuring Components ⓘ

	MEASURING COMPONENT ⓘ	MEASURING COMPONENT TYPE
1	TEST-ADD / Electric Scalar kWh - Manual Read ⓘ	Electric Scalar kWh - Manual Read

Scalar Readings ⓘ

Device

The device data could contain the following information that could be populated.

DEVICE INFORMATION
Device Type*
Serial Number
Badge Number
External ID
Manufacturer
Model
Incoming Data Shift
Arming Required
Head-End System^

*Required Fields

^Required when adding smart meters

Screenshot for Device –

Asset: Electric Smart Meter, 1902060, ER-SM-1353

Add

Search

Bookmark

Refresh

Main

Device

Maintenance

Tree View

Statistics

Asset Disposition

Asset Performance

Log

Device

Main

INFORMATION1902060 / Electric Smart Meter / Install Date/Time: 01-01-2019 0:00:00 PST / Connected / Commissioned / Active

DEVICE TYPEElectric Smart Meter

SERIAL NUMBER1902060

BADGE NUMBERER-SM-1353

ASSET ID603651507131

STATUSActive

MANUFACTURERLandis + Gyr

MODELE330/E350 FOCUS AX (Pre-Pay Ready)

ACCESS GROUP

INCOMING DATA SHIFT

FALLBACK INCOMING DATA SHIFTAlways in Local Time

ARMING REQUIRED

HEAD-END SYSTEM

FALLBACK HEAD-END SYSTEM

HEAD-END REGISTRATION STATUS

SPECIFICATIONL&GE330/E350FOCUS

CONFIGURATIONE-AUTO-KWH-60MIN

Record Actions

Edit

Delete

Record Information

Device Configuration List

Add

	EFFECTIVE DATE/TIME	DEVICE CONFIGURATION
1	2019-01-01-00.00.00	Electric Smart Meter / Effective Date/Time:01-01-2019 0:00:00 PST / Electric Auto Read - kWh - 60 min intervals / 2 Measuring Component(s) / Active

Business Object

Bookmark

Duplicate

Delete

Clear

Save

Refresh

Main

Schema

Algorithms

Lifecycle

Summary

General Information

View Schema

View XSD

BUSINESS OBJECT

D1-SmartMeter

DESCRIPTION

Smart Meter

OWNER

Service and Measurement Data Foundation

Business Object Hierarchy

FILTERS: BUSINESS OBJECT D1-SmartMeter

	BUSINESS OBJECT HIERARCHY
1	Business Object - D1-SmartMeter - Smart Meter
2	Child Business Object - D4-SmartMeter - Smart Meter - NES
3	Child Business Object - D6-SmartMeter - Sensus Smart Meter
4	Child Business Object - D7-SmartMeter - SSN - Smart Meter
5	Child Business Object - DG-SmartMeter - ADK - Smart Meter

Lifecycle Display

ACTIVE

Active

SMART METER STATE MONITOR PROCESS

RETIRED

Retired

Device Configuration – Create and Update

DEVICE CONFIGURATION INFORMATION
Device Configuration Type*
Device ID*
Effective Date/Time*
Time Zone
External ID

*Required Fields

Screenshot for Device Configuration –

Device Configuration: Electric Smart Meter / Effective Date/Time:01-01-2019 0:00:00 PST / Electric Auto Read - kWh - 60 min interv...

Search

Bookmark

Refresh

Main

Log

Device Configuration

Go To Search

Main

Record Actions

INFORMATION

Electric Smart Meter / Effective Date/Time:01-01-2019 0:00:00 PST / Electric Auto Read - kWh - 60 min intervals / 2 Measuring Component(s) / Active

DEVICE CONFIGURATION TYPE

Electric Auto Read - kWh - 60 min intervals

DEVICE

1902060 / Electric Smart Meter / Install Date/Time: 01-01-2019 0:00:00 PST / Connected / Commissioned / Active

EFFECTIVE DATE/TIME

01-01-2019 0:00:00 PST

TIME ZONE

US Pacific Time

STATUS

Active

Edit

Delete

Record Information

Measuring Components

Add

	MEASURING COMPONENT	MEASURING COMPONENT TYPE
1	1902060 / 1 / Electric Interval kWh - 60 min	Electric Interval kWh - 60 min
2	1902060 / 2 / Electric Scalar kWh - Auto Read	Electric Scalar kWh - Auto Read

Scalar Readings

Enter New Read

Business Object

Main

Schema

Algorithms

Lifecycle

Summary

General Information

BUSINESS OBJECT

D1-DeviceConfiguration

DESCRIPTION

Device Configuration

OWNER

Service and Measurement Data Foundation

Business Object Hierarchy

FILTERS: BUSINESS OBJECT D1-DeviceConfiguration

	BUSINESS OBJECT HIERARCHY
1	<div><div></div>Business Object - D1-DeviceConfiguration - Device Configuration</div>
2	<div><div></div>Child Business Object - X1-DeviceConfigForMigration - Device Configuration for Migration</div>

Lifecycle Display

PENDING

Pending

ACTIVE

Active

Options

Business Object - Device Configuration

Business Object

Main

Schema

Algorithms

Lifecycle

Summary

ACTIVE

Active

Options

Business Object - Device Configuration

Display Map Service Script

Display UI Map

Maintenance UI Map

Portal Navigation Option

Post-Processing Service Script

Pre-Processing Service Script

Synchronization Add BO

Status - PENDING - Pending

Status - ACTIVE - Active

Rules

Business Object - Device Configuration

Pre-Processing rules

Validation rules

Post-Processing rules

Information rules

Lifecycle rules

Measuring Component – Create and Update

The measurement component data that is populated can contain items in the below chart.

MEASUREMENT COMPONENT INFORMATION
Meter Configuration Type*
Device Configuration*
Consumption Reference Measuring Component
How To Use*
Number of Digits Left*
Number if Digits Right
Channel Multiplier
VEE Group for Initial Load
VEE Group for Estimation
VEE Group for Manual Override
Channel ID
External ID

*Required Fields

Note: If the Channel Multiplier field is not populated with data a default of “1.000000” will populate.

If the Measuring Component Type has been configured with *Fallback VEE Group for Initial Load*, *VEE Group for Estimation*, and *Fallback VEE Group for Manual Override.*, those fields will be populated if the data is not supplied upon creation.

Screenshot for Measuring Component –

Measuring Component: 1902060 / 1 / Electric Interval kWh - 60 min

Add

Search

Bookmark

Refresh

Main

Log

Measuring Component

Main

INFORMATION

1902060 / 1 / Electric Interval kWh - 60 min

MEASURING COMPONENT TYPE

Electric Interval kWh - 60 min

DEVICE CONFIGURATION

Electric Smart Meter / Effective Date/Time:01-01-2019 0:00:00 PST / Electric Auto Read - kWh - 60 min intervals / 2 Measuring Component(s) / Active

CONSUMPTION REFERENCE MEASURING COMPONENT

HOW TO USE

Additive

NUMBER OF DIGITS LEFT

5

NUMBER OF DIGITS RIGHT

4

CHANNEL MULTIPLIER

2.000000

CHANNEL ID

1

Processing Information

MOST RECENT READ DATE/TIME

10-01-2019 1:00:00 PDT

LAST CONTIGUOUS READ DATE/TIME

10-01-2019 1:00:00 PDT

MOST RECENT NON ESTIMATED READ DATE/TIME

10-01-2019 1:00:00 PDT

Related Statistics

RELATED STATISTICS MEASURING COMPONENTS

Electric Channel Statistics - Same Month Last Year / 1902060 / 1 / Electric Interval kWh - 60 min

Electric Channel Statistics - Prior 13 Months / 1902060 / 1 / Electric Interval kWh - 60 min

Electric Channel Statistics - Last Month / 1902060 / 1 / Electric Interval kWh - 60 min

Record Actions

Edit

Delete

Record Information

Related Projection Measuring Components

RELATED PROJECTION MEASURING COMPONENTS

Fallback VEE Groups

INITIAL LOAD

Electric Interval - Initial Load

STREAMING INITIAL LOAD

Electric Interval - Initial Load Streaming

ESTIMATION

Electric Interval - Estimation

MANUAL OVERRIDE

Electric Interval - Manual Override

PROJECTION

5.6.3.1 C2M.Manage Tracked Assets and Devices

Copyright © 2024, Oracle. All rights reserved.

60

Business Object

Main

Schema

Algorithms

Lifecycle

Summary

1

Business Object - D1-IntervalChannel - Interval Channel

Lifecycle Display ⓘ

Options

Business Object - Interval Channel

Display Map Service Script

Estimation Initial Measurement Data BO

Interval Initial Measurement Function

Manual Override IMD BO

Measuring Component Consumption Function

Portal Navigation Option

Pre-Processing Service Script

Synchronization Add BO

System IMD BO

Rules

Business Object - Interval Channel

Pre-Processing rules

Validation rules

Post-Processing rules

Information rules

Periodic Estimation rules

Business Object

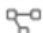
Main

Schema

Algorithms


Lifecycle


Summary


	BUSINESS OBJECT HIERARCHY
1	 Business Object - D1-Register - Register


Lifecycle Display ⓘ


Options


 Business Object - Register


 Display Map Service Script


 Estimation Initial Measurement Data BO


 Manual Override IMD BO

 Measuring Component Consumption Function


 Portal Navigation Option


 Pre-Processing Service Script


 Synchronization Add BO

 System IMD BO

Rules

 Business Object - Register

 Validation rules

 Information rules

Meter Multiplier

Meter Multiplier in Measuring Component

Measuring Component: 1902060 / 1 / Electric Interval kWh - 60 min

MainLog

Measuring Component

Main ⓘ

INFORMATION1902060 / 1 / Electric Interval kWh - 60 min ⌵

MEASURING COMPONENT TYPEElectric Interval kWh - 60 min

DEVICE CONFIGURATIONElectric Smart Meter / Effective Date/Time:01-01-2019 0:00:00 PST / Electric Auto Read - kWh - 60 min intervals / 2 Measuring Component(s) / Active ⌵

CONSUMPTION REFERENCE MEASURING COMPONENT

HOW TO USEAdditive

NUMBER OF DIGITS LEFT5

NUMBER OF DIGITS RIGHT4

CHANNEL MULTIPLIER1.000000

CHANNEL ID1

Processing Information ⓘ

MOST RECENT READ DATE/TIME10-01-2019 1:00:00 PDT

LAST CONTIGUOUS READ DATE/TIME10-01-2019 1:00:00 PDT

MOST RECENT NON ESTIMATED READ DATE/TIME10-01-2019 1:00:00 PDT

Related Statistics

Record Actions ⓘ

EditDelete

Record Information

Related Projection Measuring Components

RELATED PROJECTION MEASURING COMPONENTS

Fallback VEE Groups ⓘ

INITIAL LOADElectric Interval - Initial Load

STREAMING INITIAL LOADElectric Interval - Initial Load Streaming

ESTIMATIONElectric Interval - Estimation

MANUAL OVERRIDEElectric Interval - Manual Override

PROJECTION

5.6.3.1 C2M.Manage Tracked Assets and Devices

Copyright © 2024, Oracle. All rights reserved.

63

Installation Constant

Install Event: Install Date/Time: 01-01-2019 0:00:00 PST / Connected / Commissioned

Add

Search

Bookmark

Refresh

Main

Log

Install Event

Main

INFORMATION

DEVICE CONFIGURATION

SERVICE POINT

STATUS

INSTALLATION DATE/TIME

INSTALLATION CONSTANT

ARMING STATUS

EXTERNAL ID

MDM EXTERNAL ID

DEVICE ON/OFF STATUS

Install Date/Time: 01-01-2019 0:00:00 PST / Connected / Commissioned

Electric Smart Meter / Effective Date/Time:01-01-2019 0:00:00 PST / Electric Auto Read - kWh - 60 min intervals / 2 Measuring Component(s) / Active

10168 Hoover Ave NW, Hartville, OH, 44632 / Electric Residential / Electric / ER-SM-1353 / Read Cycle 01, Route 100 / Active

Connected / Commissioned

01-01-2019 0:00:00 PST

1.000000

Record Actions

Edit

Delete

Disconnect

Remove

Record Information

On/Off History

EVENT DATE/TIME

DEVICE ON/OFF STATUS

ACTIVITY ID

Activity Type

Activity Type - Interval

Measuring Component: 1902060 / 1 / Electric Interval kWh - 60 min

Add

Search

Bookmark

Refresh

Main

Log

Measuring Component Log

Add Log Entry

	DATE/TIME	DETAILS	STATUS REASON	USER	LOG TYPE	RELATED OBJECT
1	10-26-2022 11:44:22	Measuring Component Multiplier updated from 1.000000 to 2.000000. Measurements will be examined for reprocessing.		Nerkar, Kunal (KNERKAR)	System	Measurement Reprocess Type - Interval / 01-01-2019 0:00:00 PST - 10-01-2022 11:44:22
2	09-26-2019 20:48:00	Created.		McAuliffe (C2M Demo) , Tim (TMCAULIF)	Created	

5.6.3.1 C2M.Manage Tracked Assets and Devices

Activity: Measurement Reprocess Type - Interval / 01-01-2019 0:00:00 PST - 10-01-2019 1:00:00 PDT / Approval Required

Main

Log

Add

Search

Bookmark

Refresh

Activity

Main

INFORMATION

ACTIVITY TYPE

STATUS

START DATE/TIME

END DATE/TIME

MEASURING COMPONENT

Measurement Reprocess Type - Interval / 01-01-2019 0:00:00 PST - 10-01-2019 1:00:00 PDT / Approval Required

Measurement Reprocessing Type Activity - Interval

Approval Required

01-01-2019 0:00:00 PST

10-01-2019 1:00:00 PDT

1902080 / 1 / Electric Interval kWh - 60 min

Record Actions

Edit

Approve

Discard

Record Information

Sample File Structure for Bulk Asset Load by Asset type

W2-SmartMeter.csv

Sequ	Prim	Field	Field	Field	Field	Field	Field	Field	Field	Field	Field	Field	Field	Field	Field	Field	Field	Field	Field	Field	Field	Field	Field	Field	Field	Field	Field	Field	Field	Field	Field	Field	Field	Field	Field	Field	Field	Field	Field	Field	Field	Field	Field	Field	Field	Field	Field	Field	Field	Field	Field	Field	Field	Field	Field	Field	Field	Field	Field	Field	Field	Field	Field	Field	Field	Field	Field	Field	Field	Field	Field	Field	Field	Field	Field	Field	Field	Field	Field	Field	Field	Field	Field	Field	Field	Field	Field	Field	Field	Field	Field	Field	Field	Field	Field	Field	Field	Field	Field	Field	Field	Field	Field	Field	Field	Field	Field	Field	Field	Field	Field	Field	Field	Field	Field	Field	Field	Field	Field	Field	Field	Field	Field	Field	Field	Field	Field	Field	Field	Field	Field	Field	Field	Field	Field	Field	Field	Field	Field	Field	Field	Field	Field	Field	Field	Field	Field	Field	Field	Field	Field	Field	Field	Field	Field	Field	Field	Field	Field	Field	Field	Field	Field	Field	Field	Field	Field	Field	Field	Field	Field	Field	Field	Field	Field	Field	Field	Field	Field	Field	Field	Field	Field	Field	Field	Field	Field	Field	Field	Field	Field	Field	Field	Field	Field	Field	Field	Field	Field	Field	Field	Field	Field	Field	Field	Field	Field	Field	Field	Field	Field	Field	Field	Field	Field	Field	Field	Field	Field	Field	Field	Field	Field	Field	Field	Field	Field	Field	Field	Field	Field	Field	Field	Field	Field	Field	Field	Field	Field	Field	Field	Field	Field	Field	Field	Field	Field	Field	Field	Field	Field	Field	Field	Field	Field	Field	Field	Field	Field	Field	Field	Field	Field	Field	Field	Field	Field	Field	Field	Field	Field	Field	Field	Field	Field	Field	Field	Field	Field	Field	Field	Field	Field	Field	Field	Field	Field	Field	Field	Field	Field	Field	Field	Field	Field	Field	Field	Field	Field	Field	Field	Field	Field	Field	Field	Field	Field	Field	Field	Field	Field	Field	Field	Field	Field	Field	Field	Field	Field	Field	Field	Field	Field	Field	Field	Field	Field	Field	Field	Field	Field	Field	Field	Field	Field	Field	Field	Field	Field	Field	Field	Field	Field	Field	Field	Field	Field	Field	Field	Field	Field	Field	Field	Field	Field	Field	Field	Field	Field	Field	Field	Field	Field	Field	Field	Field	Field	Field	Field	Field	Field	Field	Field	Field	Field	Field	Field	Field	Field	Field	Field	Field	Field	Field	Field	Field	Field	Field	Field	Field	Field	Field	Field	Field	Field	Field	Field	Field	Field	Field	Field	Field	Field	Field	Field	Field	Field	Field	Field	Field	Field	Field	Field	Field	Field	Field	Field	Field	Field	Field	Field	Field	Field	Field	Field	Field	Field	Field	Field	Field	Field	Field	Field	Field	Field	Field	Field	Field	Field	Field	Field	Field	Field	Field	Field	Field	Field	Field	Field	Field	Field	Field	Field	Field	Field	Field	Field	Field	Field	Field	Field	Field	Field	Field	Field	Field	Field	Field	Field	Field	Field	Field	Field	Field	Field	Field	Field	Field	Field	Field	Field	Field	Field	Field	Field	Field	Field	Field	Field	Field	Field	Field	Field	Field	Field	Field	Field	Field	Field	Field	Field	Field	Field	Field	Field	Field	Field	Field	Field	Field	Field	Field	Field	Field	Field	Field	Field	Field	Field	Field	Field	Field	Field	Field	Field	Field	Field	Field	Field	Field	Field	Field	Field	Field	Field	Field	Field	Field	Field	Field	Field	Field	Field	Field	Field	Field	Field	Field	Field	Field	Field	Field	Field	Field	Field	Field	Field	Field	Field	Field	Field	Field	Field	Field	Field	Field	Field	Field	Field	Field	Field	Field	Field	Field	Field	Field	Field	Field	Field	Field	Field	Field	Field	Field	Field	Field	Field	Field	Field	Field	Field	Field	Field	Field	Field	Field	Field	Field	Field	Field	Field	Field	Field	Field	Field	Field	Field	Field	Field	Field	Field	Field	Field	Field	Field	Field	Field	Field	Field	Field	Field	Field	Field	Field	Field	Field	Field	Field	Field	Field	Field	Field	Field	Field	Field	Field	Field	Field	Field	Field	Field	Field	Field	Field	Field	Field	Field	Field	Field	Field	Field	Field	Field	Field	Field	Field	Field	Field	Field	Field	Field	Field	Field	Field	Field	Field	Field	Field	Field	Field	Field	Field	Field	Field	Field	Field	Field	Field	Field	Field	Field	Field	Field	Field	Field	Field	Field	Field	Field	Field	Field	Field	Field	Field	Field	Field	Field	Field	Field	Field	Field	Field	Field	Field	Field	Field	Field	Field	Field	Field	Field	Field	Field	Field	Field	Field	Field	Field	Field	Field	Field	Field	Field	Field	Field	Field	Field	Field	Field	Field	Field	Field	Field	Field	Field	Field	Field	Field	Field	Field	Field	Field	Field	Field	Field	Field	Field	Field	Field	Field	Field	Field	Field	Field	Field	Field	Field	Field	Field	Field	Field	Field	Field	Field	Field	Field	Field	Field	Field	Field	Field	Field	Field	Field	Field	Field	Field	Field	Field	Field	Field	Field	Field	Field	Field	Field	Field	Field	Field	Field	Field	Field	Field	Field	Field	Field	Field	Field	Field	Field	Field	Field	Field	Field	Field	Field	Field	Field	Field	Field	Field	Field	Field	Field	Field	Field	Field	Field	Field	Field	Field	Field	Field	Field	Field	Field	Field	Field	Field	Field	Field	Field	Field	Field	Field	Field	Field	Field	Field	Field	Field	Field	Field	Field	Field	Field	Field	Field	Field	Field	Field	Field	Field	Field	Field	Field	Field	Field	Field	Field	Field	Field	Field	Field	Field	Field	Field	Field	Field	Field	Field	Field	Field	Field	Field	Field	Field	Field	Field	Field	Field	Field	Field	Field	Field	Field	Field	Field	Field	Field	Field	Field	Field	Field	Field	Field	Field	Field	Field	Field	Field	Field	Field	Field	Field	Field	Field	Field	Field	Field	Field	Field	Field	Field	Field	Field	Field	Field	Field	Field	Field	Field	Field	Field	Field	Field	Field	Field	Field	Field	Field	Field	Field	Field	Field	Field	Field	Field	Field	Field	Field	Field	Field	Field	Field	Field	Field	Field	Field	Field	Field	Field	Field	Field	Field	Field	Field	Field	Field	Field	Field	Field	Field	Field	Field	Field	Field	Field	Field	Field	Field	Field	Field	Field	Field	Field	Field	Field	Field	Field	Field	Field	Field	Field	Field	Field	Field	Field	Field	Field	Field	Field	Field	Field	Field	Field	Field	Field	Field	Field	Field	Field	Field	Field	Field	Field	Field	Field	Field	Field	Field	Field	Field	Field	Field	Field	Field	Field	Field	Field	Field	Field	Field	Field	Field	Field	Field	Field	Field	Field	Field	Field	Field	Field	Field	Field	Field	Field	Field	Field	Field	Field	Field	Field	Field	Field	Field	Field	Field	Field	Field	Field	Field	Field	Field	Field	Field	Field	Field	Field	Field	Field	Field	Field	Field	Field	Field	Field	Field	Field	Field	Field	Field	Field	Field	Field	Field	Field	Field	Field	Field	Field	Field	Field	Field	Field
------	------	-------	-------	-------	-------	-------	-------	-------	-------	-------	-------	-------	-------	-------	-------	-------	-------	-------	-------	-------	-------	-------	-------	-------	-------	-------	-------	-------	-------	-------	-------	-------	-------	-------	-------	-------	-------	-------	-------	-------	-------	-------	-------	-------	-------	-------	-------	-------	-------	-------	-------	-------	-------	-------	-------	-------	-------	-------	-------	-------	-------	-------	-------	-------	-------	-------	-------	-------	-------	-------	-------	-------	-------	-------	-------	-------	-------	-------	-------	-------	-------	-------	-------	-------	-------	-------	-------	-------	-------	-------	-------	-------	-------	-------	-------	-------	-------	-------	-------	-------	-------	-------	-------	-------	-------	-------	-------	-------	-------	-------	-------	-------	-------	-------	-------	-------	-------	-------	-------	-------	-------	-------	-------	-------	-------	-------	-------	-------	-------	-------	-------	-------	-------	-------	-------	-------	-------	-------	-------	-------	-------	-------	-------	-------	-------	-------	-------	-------	-------	-------	-------	-------	-------	-------	-------	-------	-------	-------	-------	-------	-------	-------	-------	-------	-------	-------	-------	-------	-------	-------	-------	-------	-------	-------	-------	-------	-------	-------	-------	-------	-------	-------	-------	-------	-------	-------	-------	-------	-------	-------	-------	-------	-------	-------	-------	-------	-------	-------	-------	-------	-------	-------	-------	-------	-------	-------	-------	-------	-------	-------	-------	-------	-------	-------	-------	-------	-------	-------	-------	-------	-------	-------	-------	-------	-------	-------	-------	-------	-------	-------	-------	-------	-------	-------	-------	-------	-------	-------	-------	-------	-------	-------	-------	-------	-------	-------	-------	-------	-------	-------	-------	-------	-------	-------	-------	-------	-------	-------	-------	-------	-------	-------	-------	-------	-------	-------	-------	-------	-------	-------	-------	-------	-------	-------	-------	-------	-------	-------	-------	-------	-------	-------	-------	-------	-------	-------	-------	-------	-------	-------	-------	-------	-------	-------	-------	-------	-------	-------	-------	-------	-------	-------	-------	-------	-------	-------	-------	-------	-------	-------	-------	-------	-------	-------	-------	-------	-------	-------	-------	-------	-------	-------	-------	-------	-------	-------	-------	-------	-------	-------	-------	-------	-------	-------	-------	-------	-------	-------	-------	-------	-------	-------	-------	-------	-------	-------	-------	-------	-------	-------	-------	-------	-------	-------	-------	-------	-------	-------	-------	-------	-------	-------	-------	-------	-------	-------	-------	-------	-------	-------	-------	-------	-------	-------	-------	-------	-------	-------	-------	-------	-------	-------	-------	-------	-------	-------	-------	-------	-------	-------	-------	-------	-------	-------	-------	-------	-------	-------	-------	-------	-------	-------	-------	-------	-------	-------	-------	-------	-------	-------	-------	-------	-------	-------	-------	-------	-------	-------	-------	-------	-------	-------	-------	-------	-------	-------	-------	-------	-------	-------	-------	-------	-------	-------	-------	-------	-------	-------	-------	-------	-------	-------	-------	-------	-------	-------	-------	-------	-------	-------	-------	-------	-------	-------	-------	-------	-------	-------	-------	-------	-------	-------	-------	-------	-------	-------	-------	-------	-------	-------	-------	-------	-------	-------	-------	-------	-------	-------	-------	-------	-------	-------	-------	-------	-------	-------	-------	-------	-------	-------	-------	-------	-------	-------	-------	-------	-------	-------	-------	-------	-------	-------	-------	-------	-------	-------	-------	-------	-------	-------	-------	-------	-------	-------	-------	-------	-------	-------	-------	-------	-------	-------	-------	-------	-------	-------	-------	-------	-------	-------	-------	-------	-------	-------	-------	-------	-------	-------	-------	-------	-------	-------	-------	-------	-------	-------	-------	-------	-------	-------	-------	-------	-------	-------	-------	-------	-------	-------	-------	-------	-------	-------	-------	-------	-------	-------	-------	-------	-------	-------	-------	-------	-------	-------	-------	-------	-------	-------	-------	-------	-------	-------	-------	-------	-------	-------	-------	-------	-------	-------	-------	-------	-------	-------	-------	-------	-------	-------	-------	-------	-------	-------	-------	-------	-------	-------	-------	-------	-------	-------	-------	-------	-------	-------	-------	-------	-------	-------	-------	-------	-------	-------	-------	-------	-------	-------	-------	-------	-------	-------	-------	-------	-------	-------	-------	-------	-------	-------	-------	-------	-------	-------	-------	-------	-------	-------	-------	-------	-------	-------	-------	-------	-------	-------	-------	-------	-------	-------	-------	-------	-------	-------	-------	-------	-------	-------	-------	-------	-------	-------	-------	-------	-------	-------	-------	-------	-------	-------	-------	-------	-------	-------	-------	-------	-------	-------	-------	-------	-------	-------	-------	-------	-------	-------	-------	-------	-------	-------	-------	-------	-------	-------	-------	-------	-------	-------	-------	-------	-------	-------	-------	-------	-------	-------	-------	-------	-------	-------	-------	-------	-------	-------	-------	-------	-------	-------	-------	-------	-------	-------	-------	-------	-------	-------	-------	-------	-------	-------	-------	-------	-------	-------	-------	-------	-------	-------	-------	-------	-------	-------	-------	-------	-------	-------	-------	-------	-------	-------	-------	-------	-------	-------	-------	-------	-------	-------	-------	-------	-------	-------	-------	-------	-------	-------	-------	-------	-------	-------	-------	-------	-------	-------	-------	-------	-------	-------	-------	-------	-------	-------	-------	-------	-------	-------	-------	-------	-------	-------	-------	-------	-------	-------	-------	-------	-------	-------	-------	-------	-------	-------	-------	-------	-------	-------	-------	-------	-------	-------	-------	-------	-------	-------	-------	-------	-------	-------	-------	-------	-------	-------	-------	-------	-------	-------	-------	-------	-------	-------	-------	-------	-------	-------	-------	-------	-------	-------	-------	-------	-------	-------	-------	-------	-------	-------	-------	-------	-------	-------	-------	-------	-------	-------	-------	-------	-------	-------	-------	-------	-------	-------	-------	-------	-------	-------	-------	-------	-------	-------	-------	-------	-------	-------	-------	-------	-------	-------	-------	-------	-------	-------	-------	-------	-------	-------	-------	-------	-------	-------	-------	-------	-------	-------	-------	-------	-------	-------	-------	-------	-------	-------	-------	-------	-------	-------	-------	-------	-------	-------	-------	-------	-------	-------	-------	-------	-------	-------	-------	-------	-------	-------	-------	-------	-------	-------	-------	-------	-------	-------	-------	-------	-------	-------	-------	-------	-------	-------	-------	-------	-------	-------	-------	-------	-------	-------	-------	-------	-------	-------	-------	-------	-------	-------	-------	-------	-------	-------	-------	-------	-------	-------	-------	-------	-------	-------	-------	-------	-------	-------	-------	-------	-------	-------	-------	-------	-------	-------	-------	-------	-------	-------	-------	-------	-------	-------	-------	-------	-------	-------	-------	-------	-------	-------	-------	-------	-------	-------	-------	-------	-------	-------	-------	-------	-------	-------	-------	-------	-------	-------	-------	-------	-------	-------	-------	-------	-------	-------	-------	-------	-------	-------	-------	-------	-------	-------	-------	-------	-------	-------	-------	-------	-------	-------	-------	-------	-------	-------	-------	-------	-------	-------	-------	-------	-------	-------	-------	-------	-------	-------	-------	-------	-------	-------	-------	-------	-------	-------	-------	-------	-------	-------	-------	-------	-------	-------	-------	-------	-------	-------	-------	-------	-------	-------	-------	-------	-------	-------

W2-ManualMeter.csv

Seq	Prim	Field	Field	Field	Field	Field	Field	Field	Field	Field	Field	Field	Field	Field	Field	Field	Field	Field	Field	Field	Field	Field	Field	Field	Field	Field	Field	Field	
1	Asset	ASSE	Descr	BO_	BO_	ACT_	Creat	ASSE	Unit	SPEC	Own	ASSE	Effic	NOD	FAIL	badg	serial	palle	Purcl	exter	Confi	Warr	Warr	Devic	Devic	PO V	VEN	Vend	Purcl
2	asset	asset	descr	boSta	status	activi	creati	asset	unitP	speci	acces	asset	asset	asset	asset	badg	serial	palle	purcl	exter	config	warr	warr	vend	vend	vend	vend	partN	purcl

W2-CommunicationRelay.csv

Sequ	Prim	Field	Field	Field	Field	Field	Field	Field	Field	Field	Field	Field	Field	Field	Field	Field	Field	Field	Field	Field	Field	Field	Field	Field	Field	Field	Field	
1	Asset	ASSE	Desc	BO_	SBO_	ACT_	Creat	ASSE	Unit	SPEC	Own	ASSE	Effic	NOD	FAIL	badg	serial	palle	Purc	Firm	Warr	Warr	Devi	Devi	PO V	VEN	Venc	Purc
2	asset	asset	descr	boSta	statu	activ	creat	asset	unitF	speci	access	asset	asset	asset	asset	badg	serial	palle	purcl	firms	warrs	warrs	vend	vend	vend	vend	partn	purcl

W1-Item.csv

Seq	Prim	Field	Field	Field	Field	Field	Field	Field	Field	Field	Field	Field	Field	Field	Field	Field	Field	Field	Field	Field	Field	Field	Field	Field	Field	Field	
1	Asset	ASSE	Descr	BO_S	BO_S	ACT	Creat	ASSE	Unit	SPEC	Own	ASSE	Effec	NOD	FAIL	badg	serial	palle	Warr	Warr	Devic	Devic	PO V	VEN	Vend	Purch	
2	asset	asset	descr	boSta	status	activi	creati	asset	unit	P	speci	acces	asset	asset	asset	asset	badg	serial	palle	warr	warr	vend	vend	vend	vend	partn	purch

Miscellaneous. Related Web Services

System supports communicating with the external system via RESTful services or via SOAP services. In both cases, the system uses an object called inbound web service (IWS) to store the configuration. A web service class is used to distinguish whether the IWS is used for REST or SOAP.

Inbound Web Services:

X1-DigitalAssetEnrollment - Digital Asset Enrollments	REST
W1-InOutSvcAsset - Operational Device In/Out of Service Asset	SOAP
W1-AssetListActGenerator - Asset List	SOAP
W1-AssetCriteriaActGenerator - Asset Criteria	SOAP
W1-AssetLocation - Operational Device Asset Location	SOAP
W1-RetrieveServicePointAssets - Retrieve Service Point Assets	SOAP
W1-AssetDposHistInstallations - Asset Disposition History - Installations	SOAP
W1-ItemServicePoint - Asset Location - Item SP	SOAP
W1-GeneralAssetLocation - General Asset Location	SOAP
W1-AssetReplicationActivity - General Asset Replication Activity	SOAP
W1-AssetDispositionHistory - Asset Disposition History	SOAP
W1-GetAssetLocationDetails - Get Asset/Location Details	SOAP
W1-AssetLite - Asset	SOAP
W1-AssetQuery - Asset Query	SOAP
W1-MDMAsset - MDM Asset	SOAP
W1-TrackedAsset - Operational Device Tracked Asset	SOAP
W1GastDtIBNo - Get Asset Details By Badge Number	SOAP